



Engineering and Science Summer School

5-16 August 2019

sdu.dk #sdusummerschool

Welcome

Welcome

Welcome to the Engineering and Science Summer School 2019 at the University of Southern Denmark with two weeks of exiting academic challenges, lots of fun and meeting new friends. In this leaflet you will find practical information about the activities during the Summer School.

Index

When do we start?	3
Finding your way around campus	3
Transportation	3
Class rooms	3
Programme	4
Schedule	5
Useful contacts	9

When do we start?

The summer school officially starts Monday 5 August at 8 am in the morning with a welcome by SDU International. International students will receive their student ID and everyone will get practical information about the summer school and the events taking place during the two weeks. It is expected that all students take part in the morning welcome.

Finding your way around campus

To find the key locations for the summerschool on campus please refer to SDU Maps enabling you to search for classrooms, labs, the canteen etc. Click on the below link or download the SDU Maps app in iTunes or Google Play.

<https://clients.mapsindoors.com/sdu/573f26e4bc1f571b08094312>

Transportation

Find information about busses and trains in Odense at www.journeyplanner.dk

Class rooms

Course

- Engineering for Sustainability / **Room U180**
- Engineering Imagination / **Room U170 + Ø22-508-1**
- Experimental architecture / **Ellehammer**
- Intro to Reinforcement Learning / **Room U174**
- Project Management / **Room U182**
- Robots in Context / **Room U173**
- Experimental Fluid Mechanics / **Room U164 + Ø20-604-0 + Ø22-604-0**
- Applied Composite Drone Manufacturing / **SDU UAS Test Center**
- Modelling and Simulation of Dynamic System / **Room U176**
- Health Tech Innovator / **Room U181 + Ø22-508-0 + Ø20-508a-0**
- Continuous Delivery and DevOps / **Room U175**
- Biomass and Fuel Technology / **Room U171**
- Deep Learning / **Room U163**
- Galactic Dynamics and Dark / **Room U167**

Programme

Activities

The SDU Engineering and Science Summer School offers a full programme of social and cultural activities where you can relax after teaching hours.

The facilitating company Cresce are in charge of the social programme and their great experience and knowledge is a guarantee for hours of great fun with new friends.

www.cresce.dk

Lectures

Classes are scheduled between 8.15 AM and 5.00 PM on weekdays. In these time slots you can expect lectures, project work, exercises, preparation etc. Lunch break is between 12.00 AM and 1.00 PM. We expect you to take part in all academic activities.

sdu.dk #sdusummerschool



Week 1	Sunday	Monday	Tuesday	Wednesday	Thursday	Friday	Saturday					
8:00		Intro	Lecture	Lecture	Lecture	Lecture	Visit to Egeskov					
9:00												
10:00												
11:00												
12:00												
13:00												
14:00	Bike rental and workshop	Welcome reception	Lecture	Lecture	Lecture	Lecture	Free disposal					
15:00												
16:00												
17:00												
18:00												
19:00 - 23:00												
			Speed-friending	Programme disposal	Board Games	Programme disposal						

Week 2	Sunday	Monday	Tuesday	Wednesday	Thursday	Friday	Saturday
8:00	Free disposal	Lecture	Lecture	Lecture	Lecture	Lecture	Free disposal
9:00							
10:00							
11:00							
12:00							
13:00							
14:00							
15:00							
16:00							
17:00							
18:00							
19:00 - 23:00		Programme disposal	Karaoke Night	Programme disposal	Movie Night	Farewell Party	

sdu.dk #sdusummerschool

Sunday 4. Aug. 02:00 – 4:00 PM

Bike Rental and Workshop

- at the Athletic field at SDU

Are you ready to bike around Odense?

A rental bike, provided by Swapfits bike, can be picked up from 2 PM. All registration will be handled on the spot.

There will be a biking workshop with an introduction to the Danish biking rules and regulations as well as Danish biking culture. Afterwards we practice a bit around the athletic field and take an introductory trip around campus in the beautiful green surroundings

During the event, SDU will take pictures for promotional purposes. Please let the staff know, if you decline picture taking.

Monday, 5. Aug. 08:00 – 10:00 AM

Introduction

- in the Canteen area, near U45

The summer school officially with a welcome by SDU International. International students will receive their student ID and everyone will get practical information about the summer school and the events taking place during the two weeks. It is expected that all students take part in the morning welcome.

Monday, 5. Aug. 05:00 – 07:00 PM

Welcome reception

- in the Canteen area, near U45

Official welcome to SDU Engineering and Science Summer School with a welcome address by faculty officials. After the welcome address you can enjoy a drink with your teachers and get to know your fellow students at the welcome reception.

#sdusummerschool

sdu.dk

Tuesday, 6. Aug. 07:00 – 11:00-ish PM

Speed-friending Night

- at Studenterhuset, Amfipladsen 6, 5000 Odense

At the Speed-friending event you will get to know new people within three minutes. The event takes place, at the fizzling and bubbling student house in the city center. Your SDU student-ID, will give you a student's discount on all beverages.

During the event, SDU will take pictures for promotional purposes. Please let the staff know, if you decline picture taking.

Thursday, 8. Aug. 07:00- 11:00-ish PM

Board Game Night

- at the library at SDU

Join us for a "hyggelig" night of board games and Summer School buddies! You will be able to rent board games from the library with your SDU student-ID. There will be people to help you when renting the board game directly from the library.

During the event, SDU will take pictures for promotional purposes. Please let the staff know, if you decline picture taking.

Saturday, 10. Aug. 09:30 AM – 04:00 PM

Excursion to Egeskov castle

- Meeting point at SDU bus stop

Visit one of the most beautiful Danish landmarks: Egeskov castle. Explore the challenging garden maze, take a stroll in the many flower gardens and look at everything from above at the tree top walking.

You can visit the café or bring your own lunch bag to enjoy at the many picnic areas www.egeskov.dk/en
The ticket price is 195 kr. (~ 20 Euro) and will include transportation with private bus, admission to the castle and to all exhibitions. You will receive more information on registration.

#sdusummerschool

sdu.dk

**Tuesday, 13. Aug. 07:00 -11:00-ish PM
Karaoke Night**

- at Studenterhuset, Amfipladsen 6, 5000 Odense

Let your guard down and engage in the most universal, cross-cultural thing: Karaoke night. Some sing with ease, some find it a bit more challenging - but all can join the back-up choir together. Your SDU student-ID, will give you a student's discount on all beverages.

During the event, SDU will take pictures for promotional purposes. Please let the staff know, if you decline picture taking.

**Thursday, 15. Aug. 07:00 -11:00-ish PM
Movie Night**

-SDU, room U47

At movie night we show the Danish, critically acclaimed movie: A ROYAL AFFAIR! The movie is a historical drama, that give a little prize of the Danish puzzle, taking place in the year 1767, when Denmark was ruled by a mad king. In retrospect the king most likely was schizophrenic. There will be provided beverages during the movie.

**Friday, 16. Aug. 04:00 -11:00-ish PM
Goodbye party**

- at the Friday bar "Nedenunder"

All good things come to an end. It's time to say goodbye... We celebrate two weeks of hard work with a nice dinner buffet and an open bar.

sdu.dk #sdusummerschool

Useful contacts

Emergency calls

Dial 112 for immediate emergency and 114 to call the police

<https://studyindenmark.dk/live-in-denmark/health-safety/safety>

Student Services at SDU

Main hall way (Gydehutzen)

Campusvej 55

5230 Odense M

Opening Hours: Monday - Friday 10:00 AM - 2:00 PM

Doctor on Duty (Lægevagten)

Klørvænget 25

5000 Odense C

Tel.: +45 7011 0707

Opening Hours: Monday - Friday 4:00 PM - 08:00 AM

Weekends and public holidays: 24 hours

Dental Emergency Service (Tandlægevagten)

Heden 7, 3 sal

5000 Odense C

Tel.: +45 99440809

Opening Hours: Saturdays and Sundays and Public holidays

10:00 - 12:00 am. Weekdays call for appointment

DSB (Train Station)

Odense Banegård Center

Østre Stationsvej 27

5000 Odense C

Tel.: +45 7013 1415

www.dsb.dk/en/

Social event coordinator

E-mail: piero.gentilini@cresce.dk

Odense Tourist Information (Odense Turist Kontor)

Rådhuset (Town Hall)

5000 Odense C

Tel.: +45 6375 7520

<http://www.visit odense.com/>

E-mail: otb@visit odense.com

Opening hours: Monday - Friday 9:30 AM - 6:00 PM

Saturday 10:00 am - 3:00 pm, Sunday 11:00 am - 2:00 pm

Police Station and Office for Foreign Nationals

Police Station

Hans Mules Gade 1-3

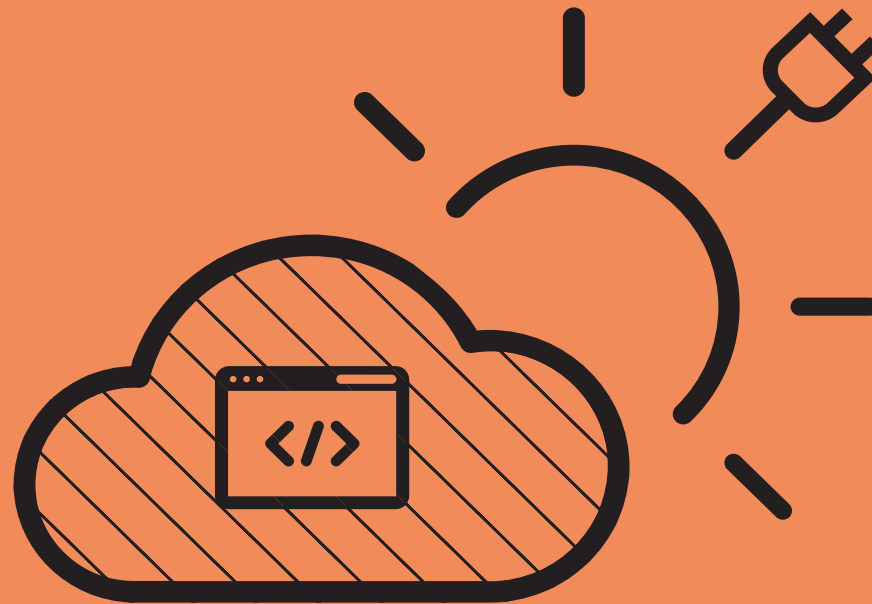
5000 Odense C

Tel.: +45 6614 1448

E-mail: fyn@politi.dk

www.politi.dk/en

sdu.dk #sdusummerschool



Engineering and Science Summer School 2019

#SDUSummerSchool