

# Departmental Lecture Series 2016/17

Department of Biology



## November 18 - April 7

### BIO Lunch room on Fridays 15.00 - 16.00h

18/11 Longevity only a question of chance?



**Ulrich Steiner**  
Department of Biology  
University of Southern Denmark

02/12 Managing environmental resources  
at the global level



**Katherine Richardson**  
Center for Macroecology, Evolution and Climate  
University of Copenhagen

16/12



In search of transcending the  
limitations of human biology

**Miroslav Radman**  
Necker Institute, France  
MedILS, Croatia

06/01 Climate adaptation and environmental  
effects of stormwater on recipients



**Sara Egemose**  
Department of Biology  
University of Southern Denmark

20/01 Myth and mystery: mid-water methane



**Kam Tang**  
Department of Biosciences  
Swansea University, UK

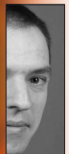
03/02



The Quantum Robin: magnetic orientation  
and magnetoreception in birds

**Henrik Mouritsen**  
Neurosensory Sciences  
University of Oldenburg, GER

10/02 How hot springs could help diabetes:  
archaeal membranes and drugs



**Alexander Treusch**  
Department of Biology  
University of Southern Denmark

24/02 Freshwater eels :  
Marvelous and mysterious



**Kim Aarestrup**  
Freshwater Fisheries Ecology  
DTU Aqua

10/03



How to kill blind passengers:  
Invasive species in ships ballast water

**Henrik Holbech**  
Department of Biology  
University of Southern Denmark

24/03 Struggles of bats: compromises and  
limitations of flight and echolocation



**Lasse Jakobsen**  
Department of Biology  
University of Southern Denmark

07/04 Metagenomics at the speed of light



**Oded Beja**  
Faculty of Biology  
Israel Institute of Technology, ISR

All lectures will be held at the Odense Campus of the University of Southern Denmark (SDU). All lectures will be held in the Biology lunchroom on Fridays from 15.00 - 16.00h.

**Free drinks and snacks afterwards - fridaybar.**  
For updated information please visit the website of the Department of Biology via [www.sdu.dk](http://www.sdu.dk).