



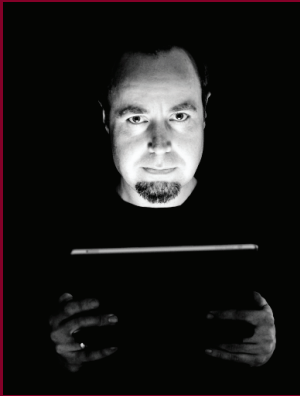
# Research Support Services

# "Your library is your paradise"

Desiderius Erasmus

---

Access to a research library is your  
garantee for high quality research support



**Bertil F. Dorch, PhD**  
Library Director

"Having access to a research library is a fundamental research support service if there ever was one: classical library services for researchers of course include access to recent scholarly information - as well as to the canonical know-ledge data base of science - and both are essential for scholars' fundamental need to read in order to write. However, library research support services provide much more than just access: Highly skilled library staff offers direct support to researchers in various aspects of scholarly communication, from accessing to preparing and publishing new science and academic works. Furthermore, research support services from the library, transcends paper and books, as research evolves to encompass digital scholarship, research data management and research analyses."



**Charlotte Wien,**  
Professor  
Head of Research  
Support Services

"At the University Library of Southern Denmark we see it as our responsibility to ensure, that the faculty at SDU have access to a wide range of services aimed at enhancing their research performance. Besides sophisticated, systematic literature searches, we offer compilation of literature summaries, assistance with data management planning, bibliometric analyses, and training in research ethics. We carry out bibliometric analyses for both university management and individual faculty members, and we offer both pre- and post-grant assistance with Research Data Management (RDM). We support Open Access, both practically and economically through our Open Access funds, and we are responsible for the registration of all research activities through the SDU Repository (PURE)."

Updated version of this folder:



## Coordinators:



**Anne Thorst Melbye**  
atm@bib.sdu.dk  
Coordinator of PURE service



**Asger Væring Larsen**  
avla@bib.sdu.dk  
Coordinator of Research  
Data Management Support



**Daniella Bayle Deutz**  
dbd@bib.sdu.dk  
Coordinator of Research analysis



**Lasse Østengaard**  
lasseoestengaard@bib.sdu.dk  
Coordinator of Screening for plagiarism



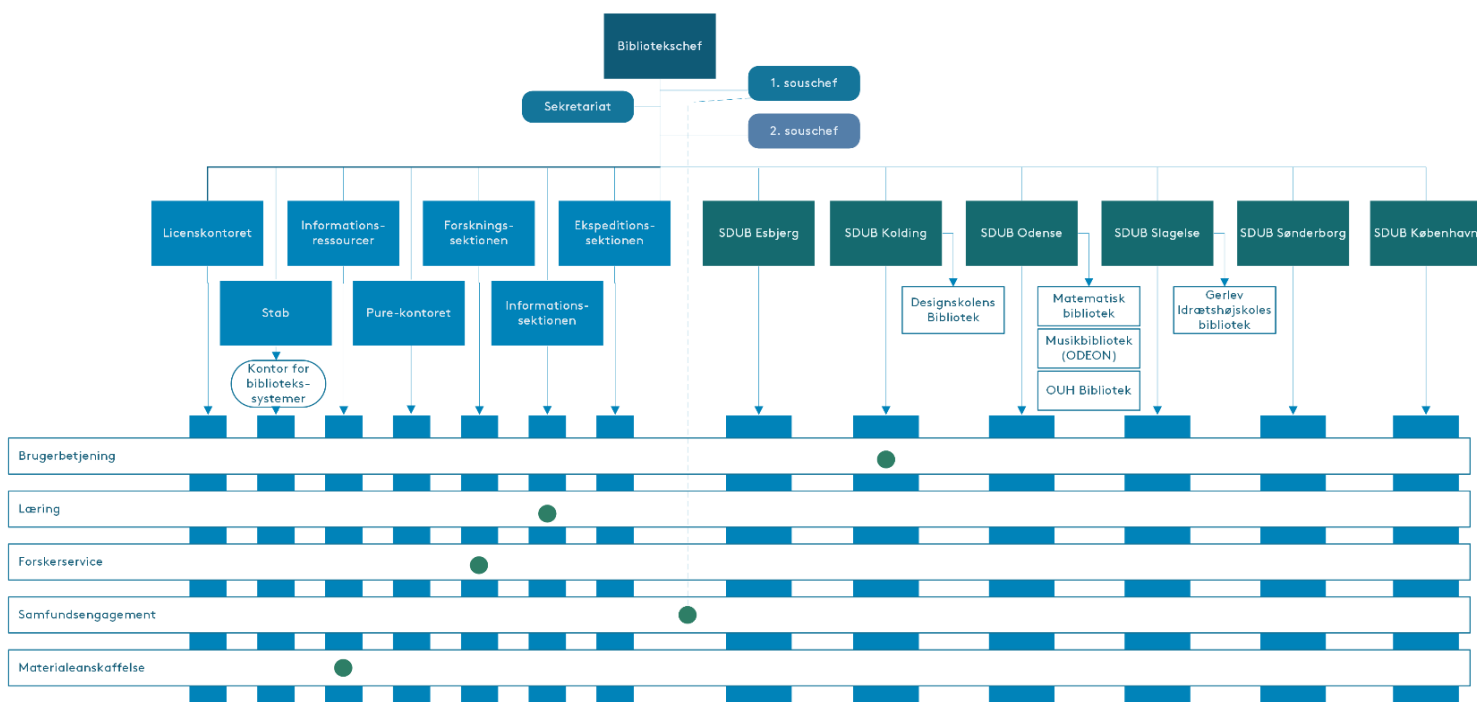
**Lone Bredahl Jensen**  
lbredahl@bib.sdu.dk  
Coordinator of Responsible  
Conduct of Research (RCR)



**Mette Brandt Eriksen**  
mettee@bib.sdu.dk  
Coordinator of Systematic  
literature searches and reviews

# Organisation

## Research Support Services



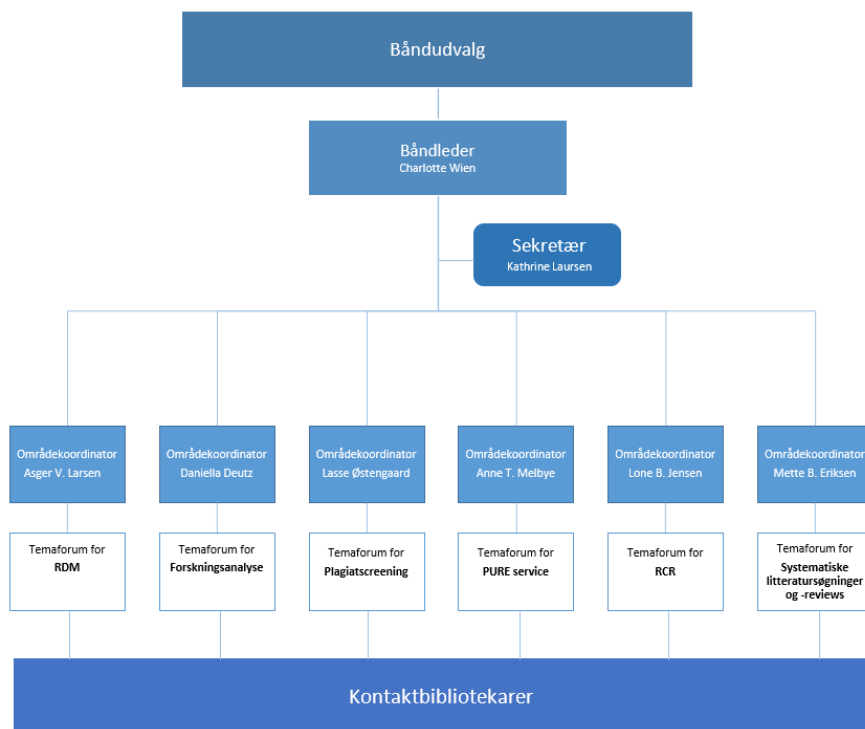
De lodrette elementer i modellen illustrerer afdelings- og personaleledelsesstrukturen. De vandrette elementer illustrerer tværgående funktioner organiseret i tværgående fælles bånd. Cirkelmarkering repræsenterer båndledere.

### The Fellowship at SDUB

The research support service unit at SDUB wants to follow research developments closely. Therefore, SDUB has established a two-month fellowship which will be repeated annually. We offer two months' salary to a researcher from our field, in return for which they are to share their research with us and help to qualify and develop our researcher services.

Examples of arrangements:

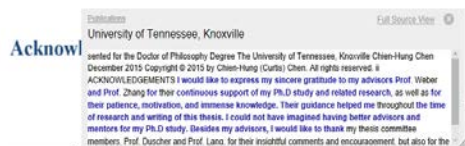
- Workshop on bibliometrics
- GDPR and Research management
- Responsible research practices
- Predatory journals



# Screening for plagiarism

Coordinator: Lasse Østengaard

Members: 7 employees

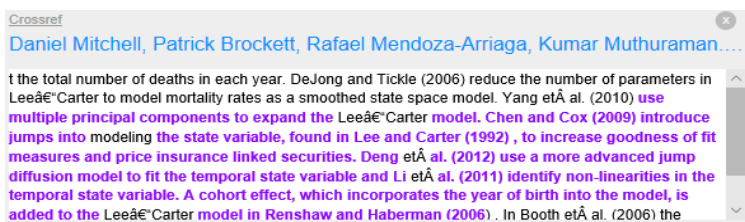


University of Tennessee, Knoxville

Acknowledgements

I would like to express my sincere gratitude to my advisors Prof. [redacted] and Prof. [redacted] for the continuous support of my Ph.D. study and related research, for their patience, motivation, and immense knowledge. Their guidance helped me in all the time of research and writing of this thesis. I could not have imagined having a better advisors and mentors for my Ph.D. study.

Besides my advisors, I would like to thank [redacted] for his insightful comments and encouragement. I would like to thank him for the stimulating discussions, and for all the fun we



Daniel Mitchell, Patrick Brockett, Rafael Mendoza-Arriaga, Kumar Muthuraman...

the total number of deaths in each year. DeJong and Tickle (2006) reduce the number of parameters in Lee's Carter model to model mortality rates as a smoothed state space model. Yang et al. (2010) use multiple principal components to expand the Lee's Carter model. Chen and Cox (2009) introduce jumps into modeling the state variable, found in Lee and Carter (1992), to increase goodness of fit measures and price insurance linked securities. Deng et al. (2012) use a more advanced jump diffusion model to fit the temporal state variable and Li et al. (2011) identify non-linearities in the temporal state variable. A cohort effect, which incorporates the year of birth into the model, is added to the Lee's Carter model in Renshaw and Haberman (2006). In Booth et al. (2006) the

(2010) take a further step and use multiple principal components to expand the LC model. Chen and Cox (2009) introduce jumps into modelling the state variable, found in Lee and Carter (1992), to increase goodness of fit measures and price insurance linked securities. Deng et al. (2012) use a more advanced jump diffusion model to fit the temporal state variable and Li et al. (2011) identify non-linearities in the temporal state variable. A cohort effect, which incorporates the year of birth into the model, is added to the LC model in Renshaw and Haberman (2006). And more recently, Mitchell et al. (2013) used a methodology similar to LC to model the changes in log mortality rates rather than levels of log mortality rates.

# Systematic literature searches and reviews

Coordinator: Mette Brandt Eriksen

Members: 9 employees

- ❖ The amount of evidence from research is massive<sup>1,2</sup>, with an exponential growth in global scientific publication output<sup>3</sup>
- ❖ Systematic reviews aim to answer specific research questions, by collating all evidence that fits predefined criteria. To ensure high quality and minimize bias, systematic reviews are carried out by using systematic, transparent and precise methods<sup>1,4</sup>
- ❖ The systematic literature search is an essential part of a systematic review. It aims to collect all evidence that forms the basis of the systematic review. Therefore, the literature search potentially affects the quality of the systematic review<sup>6</sup>.
- ❖ In addition to conducting the literature search technically correctly, it is important to search multiple databases and information sources, to identify as many relevant studies as possible<sup>7</sup>. The choice of databases and information sources to search depends on the specific subject.

## Literature search

- ❖ We offer individual guidance on literature searches, selection of databases and information resources
- ❖ We offer courses on literature searches and the selection of databases and information resources
- ❖ We offer courses on reference management, Endnote and the systematic review program Covidence
- ❖ We conduct literature searches by appointment. We charge for this service.

<sup>1</sup> Green S, Higgins JPT, Alderson P, Clarke M, Mulrow CD, Oxman AD. Chapter 1: Introduction. In: Higgins JPT, Green S (editors), Cochrane Handbook of Systematic Reviews of Interventions. Chichester (UK): John Wiley & Sons (2008). <sup>2</sup> Arif Jinha (2010). Learned Publishing, 23(3), 258-263. <sup>3</sup> Bornmann L., Mutz R. JASIST (2015); 66(11): 2215-2222. <sup>4</sup> Campbell Collaboration. Website: <https://campbellcollaboration.org/research-resources/writing-a-campbell-systematic-review/systemic-review.html> (last visited 9.8.2018). <sup>5</sup> McGowan J, Sampson M, Salzwedel DM, Cogo E, Foerster V, Lefebvre C. PRESS Peer Review of Electronic Search Strategies: 2015 Guideline Statement. J Clin Epidemiol 2016; 75: 40-46. <sup>6</sup> Lefebvre C, Manheimer E, Glanville J. Chapter 6: Searching for Studies. In: Higgins JPT, Green S (editors), Cochrane Handbook of Systematic Reviews of Interventions. Chichester (UK): John Wiley & Sons (2008).

# Research analysis

Coordinator: Daniella Deutz

Members: 9 employees

## Research analysis

Analyses of the performance indicators of individual researchers or research units

- ❖ All analyses will be made according to the guidelines in the Leiden Manifesto



## Researcher Footprint

- ❖ A concept developed at SDUB
- ❖ Provides a quick survey of the major bibliometric performance indicators
- ❖ Will only be made when researchers agree to it
- ❖ Will be delivered personally and explained individually
- ❖ Further developments: will be adapted to the requirements of the individual faculties



## Surveys of the bibliometric performance indicators of research units

- ❖ (Annual) survey of developments in the research output of a unit
- ❖ Comparisons with similar units
- ❖ Further development: a brief version of this

# PURE service

Coordinator: Anne Thorst Melbye

Members: 13 employees

## Research registration

The PURE office at SDUB works on:

- ❖ Registering research output: publications, activities, lectures, CVs etc.
- ❖ Ensuring Open Access to publications: including the Open Access fund
- ❖ Quality checking for BFI-registration
- ❖ Making reports for use in internal and external communication

From the summer of 2018 onwards, the office is the central research registration unit at SDU. Information from PURE can be found at [www.sdu.dk](http://www.sdu.dk). We expect that a new researcher portal will be launched during spring 2019.



**Søren Bertil Fabricius Dorch**  
Ph.D.  
Overbibliotekar, Syddansk Universitetsbibliotek. Odense. Sekretariat  
Bibliotekschef, Fællesområdet

Publikationer: 1998-2018  
1998 2018

Offentligt CV - 11/23/13  
Offentligt CV - 12/1/15

Telefon  
65502610, 65502683

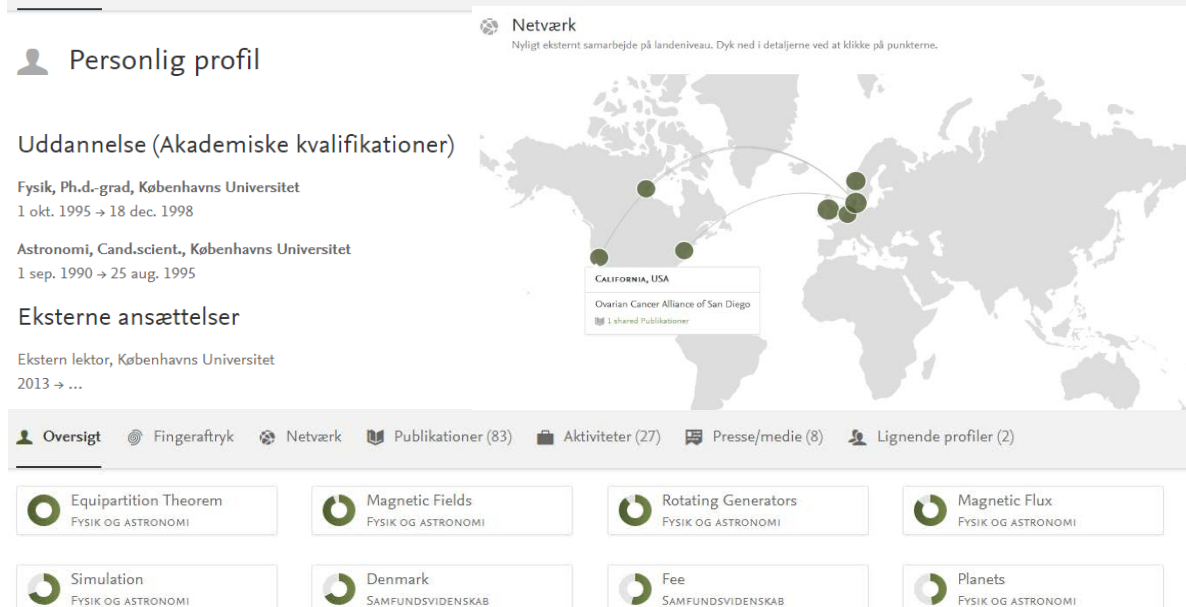
E-mail  
bfd@bib.sdu.dk

Campusvej 55  
5230 Odense M  
Danmark

Vis Scopus Profil

**Entries in Pure – an example**

Overzicht | Fingeraftryk | Netværk | Publikationer (83) | Aktiviteter (27) | Presse/medie (8) | Lignende profiler (2)



**Personlig profil**

Uddannelse (Akademiske kvalifikationer)

Fysik, Ph.d.-grad, Københavns Universitet  
1 okt. 1995 → 18 dec. 1998

Astronomi, Cand.scient., Københavns Universitet  
1 sep. 1990 → 25 aug. 1995

Eksterne ansættelser

Ekstern lektor, Københavns Universitet  
2013 → ...

Netværk  
Nyligt eksternt samarbejde på landniveau. Dyk ned i detaljerne ved at klikke på punkterne.

CALIFORNIA, USA  
Ovarian Cancer Alliance of San Diego  
1 shared Publikationer

Overzicht | Fingeraftryk | Netværk | Publikationer (83) | Aktiviteter (27) | Presse/medie (8) | Lignende profiler (2)

Equipartition Theorem  
FYSIK OG ASTRONOMI

Magnetic Fields  
FYSIK OG ASTRONOMI

Rotating Generators  
FYSIK OG ASTRONOMI

Magnetic Flux  
FYSIK OG ASTRONOMI

Simulation  
FYSIK OG ASTRONOMI

Denmark  
SAMFUNDSDVIDENSKAB

Fee  
SAMFUNDSDVIDENSKAB

Planets  
FYSIK OG ASTRONOMI

# Responsible Conduct of Research (RCR)

Coordinator: Lone Bredahl Jensen

Members: 12 employees

## Teaching Responsible Conduct of Research for PhD Students

### Summary

The overall learning objective of the teaching activity is to contribute to PhD students' ability to conduct research in accordance with scholarly rules, principles and guidelines, and current practices at SDU. Following conspicuous cases of research misconduct, among established researchers in well-reputed universities, universities all over the world are these years strengthening their activities to enforce more knowledge in the research community of responsible research practices. One of the local initiatives is mandatory courses in Responsible Conduct of Research for all PhD students at SDU.

The courses are taught by a combination of library personnel and faculty, and follow a blended learning structure. Student evaluations show students to appreciate the course and become more capable of avoiding 'stupid mistakes'. The course is continuously developed further in terms of contents and learning tools.

### Learning objectives

By completing the course, participants

- Become knowledgeable about and understand the basic principles of responsible conduct of research (RCR) and grey zone areas
- Will be able to account for their own research projects in terms of the principles
- Will be able to actively integrate RCR principles in their future research

### Course Structure

All courses follow the same modular structure, with disciplinary 'flavour':

- Module 1:** Responsible conduct of research
- Module 2:** Laws and regulations
- Module 3:** Data transparency
- Module 4:** Publication, authorship, and peer reviewing

### Experiences

Fraud and research misconduct are severe issues. Often, the problem rests with the grey zones. For these reasons, we

- Consider the physical encounter between students and lecturers a crucial element of the course
- Facilitate group discussions as much as possible
- Communicate law information and other more fact-oriented contents in e-modules

Evaluations show students to highly appreciate the setup.

### Next Steps

We continuously develop contents and pedagogical instruments, taking resources into account. As of this autumn:

- More online dialogue tools will be used. Students will be asked to comment on each other's reflections on RCR in relation to own PhD project, in discussion boards.
- Group work on RCR dilemmas will be implemented in more courses.
- Next generation teaching resources from faculties are being incorporated.

### IT Didactical Reflection Model

The diagram is a 2x2 matrix with 'Dialogue' at the top, 'Monologue' at the bottom, 'Physical' on the left, and 'Virtual' on the right.

- Top-Left (Dialogue/Physical):** Interactive teaching using collaborative IT tools: Student response systems, polls, ... LMS system tools is used as activating / interacting elements. Synchronously dialogue.
- Top-Right (Dialogue/Virtual):** Online courses. Virtual conference rooms. Activities using LMS system as platform. Online dialogue, synchronously or asynchronously.
- Bottom-Left (Monologue/Physical):** One-way communicative lecture using presentation tools: film, pdf, ... Dialogue not possible or minimized. LMS system is used as an archive.
- Bottom-Right (Monologue/Virtual):** Stand alone e-learning objects. Dialogue not possible or minimized. Embedded in e.g. the LMS system.

### Course Facts

\*14. juni 2018

Faculty	Start up	# Courses to date*
Medicine	2014	19
Science	2015	5
Humanities	2015	4
Social Science	2016	3
Engineering	2018	1

# Research Data Management Support

Coordinator: Asger Væring Larsen

Members: 12 employees

RDM Support will help researchers at SDU handle their research data. We offer help with:

- ❖ IT solutions for research projects (storage, data gathering, sharing, etc.)
- ❖ Legal assistance (reporting to RIO, declarations of consent, etc.)
- ❖ Planning data management
- ❖ Preparing for GDPR
- ❖ Publishing research data

Managing research data is becoming an increasingly bigger part of research work. It is important that support is provided for it, as it is still a new and challenging experience for many. The main problem areas are technical questions, new ways of handling data and the legal requirements of GDPR. This means that help and advice is needed in many areas.

RDM Support aims to offer as much help as we can in the greatest possible number of areas through dialogue with individual researchers, and also in cooperation with IT service, RIO, the research support units, eScience Center, and the University Library.

## Homepage for RDM Support

[www.sdu.dk/rdmsupport](http://www.sdu.dk/rdmsupport)

The homepage will be updated with our newest material as we get it ready. Here you will find links for useful resources on research data management, and you can already find links for a tool for developing plans for data management within the new Open Science policy of SDU. There is also a link to material on GDPR at SDU's SharePoint site.

# Research Support Services: New Areas to be Developed

## To be established: Innovative Forms of Publishing

### *Social media in general*

Facebook, Youtube, Twitter, Whatsapp, Instagram, Linkedin etc. are platforms which can help researchers draw attention to their research and thus strengthen their networks.

We see that both young researchers and senior researchers feel uncertain about the potentials of social media.

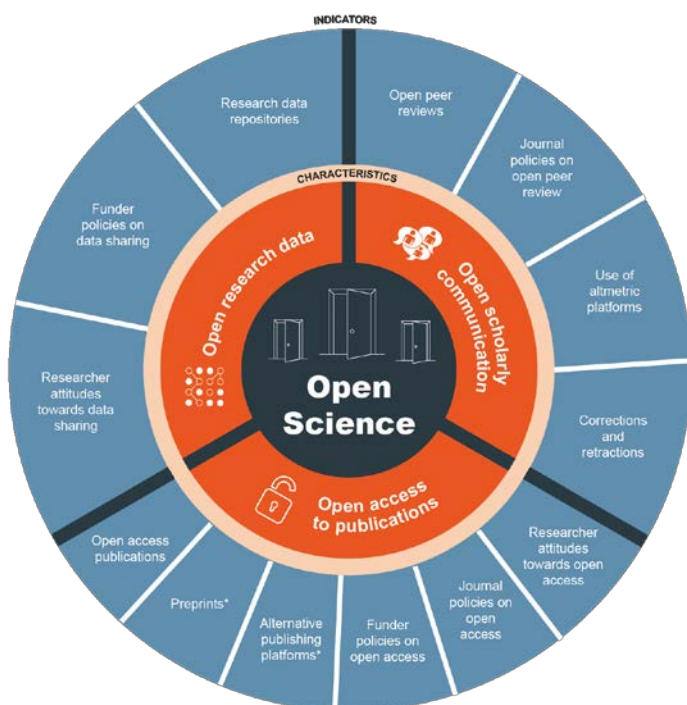
From our own experience and from numerous surveys we know that social media are increasingly used to “market” research, and that it works. But how do you market your own research on these media in a proper and serious way?

### *Research-specific social media*

Mendeley, Kudos, Research Gate, Academia.edu and many other so-called social media for researchers keep trying to attract researchers from SDU. But what are the differences between them? What are they good at? Which ones should be avoided? Where do you get the greatest effect, and how do you market your research efficiently, and in an ethically and legally responsible manner?

The new forum aims to answer these and similar questions for researchers.

## To be established: Open Science



The Open Science movement is an important factor in the fight against the business model of the scientific publishers. It is obvious to both politicians and to University directors and research libraries why this fight is an important one. The reasons for engaging in it are less clear to the individual researcher.

Open Science is a general concept, which comprises:

- Open Access
- Open Data
- Open Peer Review
- Open Source
- Open Methodology
- Open Educational Resources
- Citizen Science

SDUB has engaged itself strongly in Open Science through a team of highly qualified employees, and has become a veritable knowledge bank over the last four years. In the Research Support Services unit, we intend to start a forum for Open Science, which will inform researchers on Open Science as well as find methods to strengthen their motivation for joining it, and also identify “best practices”.