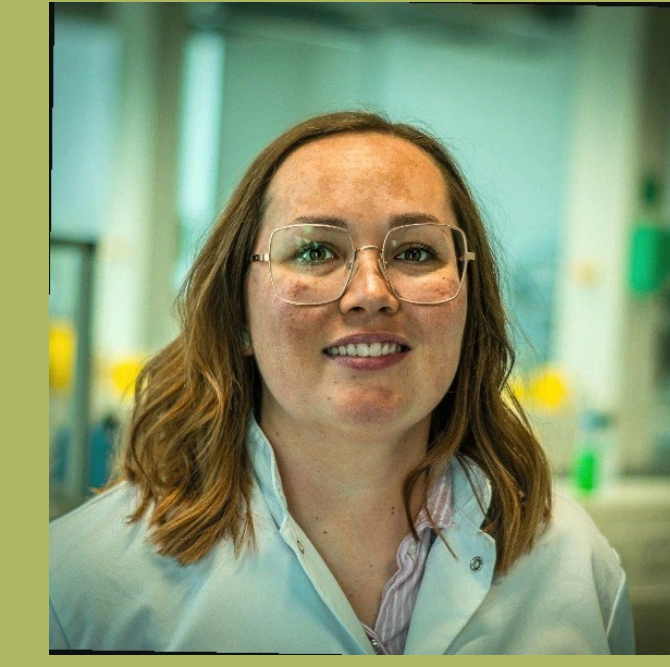
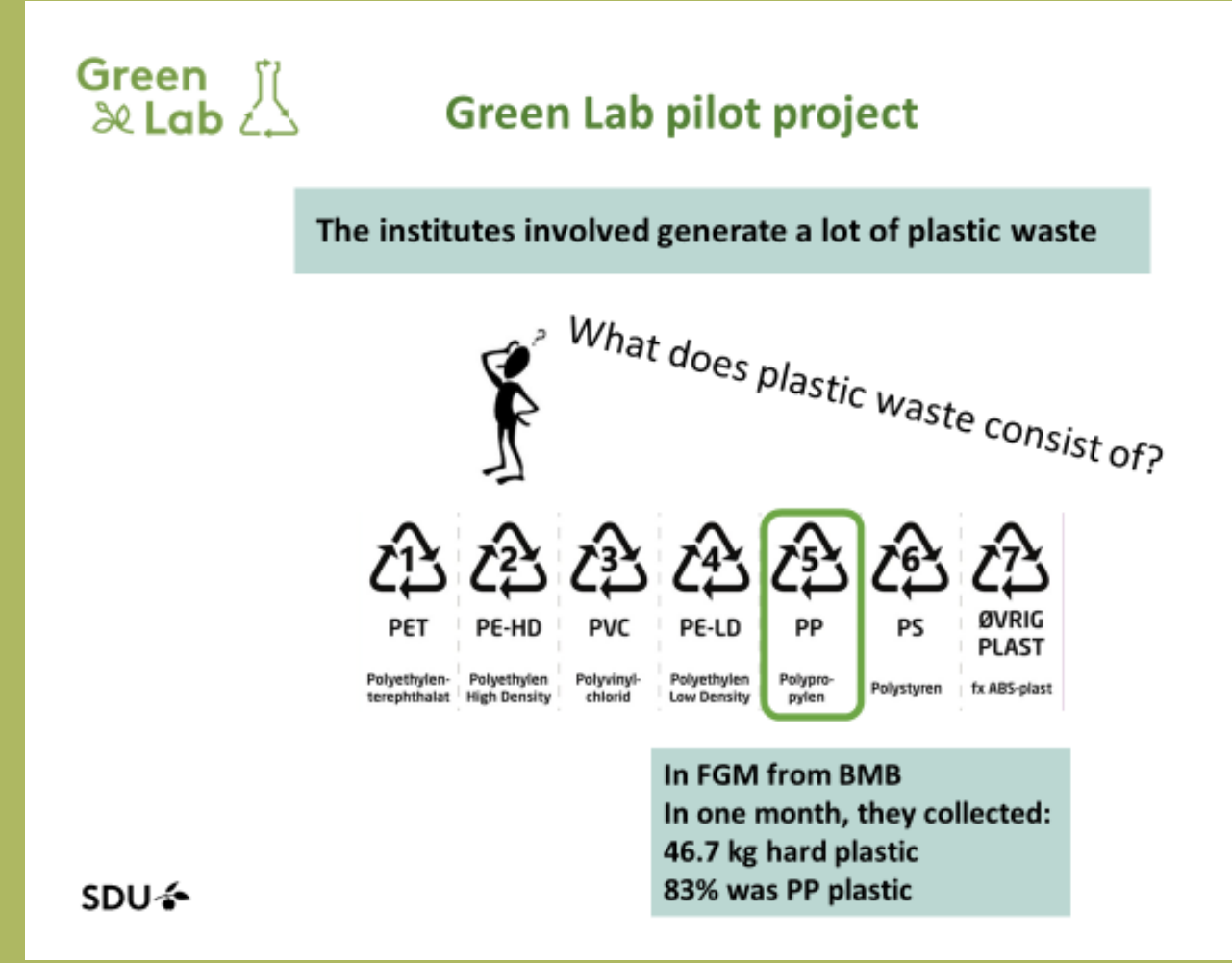


Collaboration

Involvement of many users and areas of expertise

Case example: "The Plastic Granulator"

See the problem in the lab



Solution idea



user of the plastic granules, AVL



Waste responsible SDU



Central procurement SDU



Decentral procurement BMB, SDU

- Granulate the plastic at SDU and transport it directly to the end user of the plastic granules, AVL.
- In this way, the transport via the waste company is skipped *and* it is more efficient to transport the plastic granules compared to the transport of the raw plastic boxes etc.
- In this way, the end user of the plastic is known

Putting into operation



Waste responsible and Laboratory staff – from SDU Green teams



Associate professor Organic Chemistry FKF, NAT, SDU



Special consultant, Chemist SDU Green Technology, TEK



Associate professor SDU Green Technology, TEK

Project: Analysis of plastic material

Purpose: To identify SDU plastic waste that can be recycled and thus is a resource.



Energy consultant SDU



Associate professor SDU Life Cycle Engineering



Senior consultant SDU Climate account

Is it a sustainable solution?

