

Electronics, Mechanical Engineering & Design

Schneider Electric
Odense Maritime Technology A/S
Gram Equipment A/S
Melsing Engineering & Consulting
Futree

Haarslev Industries
Newtec A/S
Airteam A/S
Kirkholm Maskiningeniører A/S
Micro Technic

Ø20-508a-0

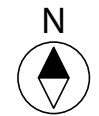
Electronics, Mechanical Engineering & Design

Fjernvarme Fyn
Danfoss A/S
Cabinplant
KAMI & COTECH
Kverneland Group Kerteminde A/S

SBS Friction A/S
Kompan A/S
Falck-Schmidt ApS
SH Group A/S

Ø22-508-0

Catering
U 160



Ground Floor

Faculty of Engineering
Champagne building

Information/labels

Knoldene Ø
- Entrance

April 22th



Praktik -og Projektdag



sdu.dk/tech

#sdutech

Construction & Civil Engineering

A. Enggaard A/S
Aarsleff Rail
Dines Jørgensen & CO A/S
Per Aarsleff A/S
Munck Gruppen

COWI A/S
CRH Concrete A/S
Niras
Enemærke & Petersen A/S
Banedanmark

Ø20-604-0

Construction & Civil Engineering

AI A/S
H. Skjøde Knudsen A/S
Assens Forsyning
VITA ingeniører A/S
SE Byg A/S

Rambøll
Sweco Danmark
Nordfyns Kommune
Odense Havn A/S
Arkil

Ø22-604-0

Automation, Drones & Robotics

Capra Robotics
B&R Industrial Automation
Leica Geosystems Technology A/S
Inwatec ApS
Odense Robotics
AirPlate

4TECH Robotics ApS
Nilpeter A/S
Quadsat ApS
Eltronic A/S
TRDP ApS

Ø20-508a-1

Software development & IT Architecture

Morningtrain ApS
Accenture
AIR SUPPORT A/S
EG Digital Welfare
CleanManager

CTcoin A/S
Bankdata
Jeppesen ForeFlight
Unicontrol

Ø22-508-1

SDU RIO
U172

Pitch
U170

Student Check In



Pitch
U177



Floor 1

Faculty of Engineering
Champagne building

April 22th



Praktik -og Projektdag



sdu.dk/tech #sdutech

All engineering skills

GOTO Sønderborg
AGRAMKOW A/S
Circle Consult
FTZ Autodele & Værktøj A/S

FLA- Female Leadership
Academy
Forsvaret
Energinet

Ø20-604b-1

All engineering skills

Bureau Veritas Denmark
NG Nordic Denmark A/S
GEVEKO markings
Helix Lab
VELUX

Blinktroll Robotics
NNE A/S
Meneta Advanced Shim
Technology A/S

Ø22-604-1

Chemical- Biotechnology- and Environmental engineering