

# ANNUAL REPORT 2022

---



We give families a FaCe

**FaCe - Family  
focused  
healthcare  
research Center**

**SDU** 

**OUH**  
Odense Universitetshospital  
Svendborg Sygehus

# Data sheet

Annual Report 2022

FaCe - Family focused healthcare research center

The annual report is composed and published in cooperation with researchers and colleagues affiliated with Family focused healthcare research center.

January 2023

## Editor

Family focused healthcare research center.

Department of Clinical Research, University of Southern Denmark

Odense University Hospital

DK-5200 Odense C



[kdieperink@health.sdu.dk](mailto:kdieperink@health.sdu.dk)



[FaCe - Family focused healthcare research Center - SDU](#)



<https://www.linkedin.com/company/face-family-focused-healthcare-research-center/>



@FaCeSDU

Editorial: Anne Møller Clausen and Karin B. Dieperink

# PREFACE

Dear reader,

With this annual report, we want to expose you to the spirit and the activities in FaCe - Family focused healthcare research Center.

On the first pages, we give a short background information about who we are, what we strive for, how we work and how we see family health.

On the following pages, we list some of the activities in FaCe from 2022.

We hope you will find the reading interesting and inspiring, and if you do, do not hesitate to contact us. We are always looking for new researchers and collaborators.

Best regards

Professor & Head af research  
Karin B. Dieperink



# TABLE OF CONTENTS

01	About us – FaCe	18	Book chapters 2022
02	Family health and our purpose	19	Conference contribution 2022
03	Research week 2022	21	Reference list
04	Synthesis of publications affiliated to FaCe from 2020 to 2022	25	Save the date
09	Current research projects		
13	The steering group		
14	Global collaboration		
15	Peer reviewed publications 2022		



SDU 

# About FaCe

The Family focused healthcare research Centre - FaCe at the University of Southern Denmark was established in January 2020. To our knowledge FaCe is the first multidisciplinary research center worldwide to unite researchers and investigate how to increase family health across diagnoses and sectors.

The overall aim of FaCe is a multidisciplinary research center and a research program with a focus on the health of patients and their close family members affected by acute or chronic conditions across the patient trajectory.

FaCe is created to encompass a bridging between different research units at the Department of Clinical Research at the Faculty of Health Sciences, University of Southern Denmark (SDU) and different departments treating families at Odense University Hospital and the hospitals and municipalities in the Region of Southern Denmark.

FaCe support the UN's Sustainable Development Goals, especially goal no. 3 "Health & Well-being" which is important for SDU to follow.

We target the care of the patient and family within the multidisciplinary healthcare team.

We investigate:

1. Needs of patients & families in different phases of the disease trajectory
2. Development of outcomes
3. Effective interventions and
4. How to implement these in a clinical workflow



THE GLOBAL GOALS



We give families a FaCe

# Family

The western lifestyle with an increase in divorces and migration has created changed family patterns. Thus, the concept of family has many forms varying from extended family groups to small groups of next of kin comprising of two-generation households or one-generation household in late life. Therefore, FaCe defines family as one or more individuals nominated by the patient, who are most meaningful and supportive to the patient in the actual time of needs, and not exclusively in bloodlines.

## Family health

“A resource at the level of the family unit that develops from the intersection of the health of each family member, their interactions and capacities, as well as the family’s physical, social, emotional, economic, and medical resources. Family health is greater than the sum of its parts. Positive family health promotes family members’ sense of belonging and capacity to develop and adapt, to care for one another, and to meet responsibilities.” Weiss-Laxer et al 2020.

# FACE SESSION AT RESEARCHWEEK

In November 2022 FaCe had a session about family health at research week held by Odense University Hospital and Department of Clinical Research University of Southern Denmark.

Professor and head of research Karin Dieperink started the session with a oral presentation about FaCe.

She was followed by an inspiring presentation by Dr. Elisabeth Coyne, highlighting the path to recovery in families affected by cancer.



Phd student Christina Østervang.

Afterwards Ph.d. student Christina Østervang presented the development of a health information system to support emergency care for patients and family members.

Ph.d. student Camilla Littau Nielsen presented how to work with compassion in families with children sick of cancer and healthcare professionals.

At last a virtual presentation by Ph.d. student Lisbeth Birkelund was presented about family health in multi-lingual meetings in the Danish healthcare system.

Professor Lisbeth Kirstine Rosenbek Minet summed up and closed the FaCe session.



Dr. Elisabeth Coyne



Professor Lisbeth Minet



# Synthesis of publications affiliated to FaCe from 2020 to 2022



In 2022 we welcomed our first trainee: Elisabet Skaalum Mikkelsen. She is in the final year of her studies as cand.scient.san at University of Southern Denmark. In the practice period Elisabet conducted an integrative review to create an overview of the research-based knowledge on family health from publications affiliated to FaCe. The purpose was to identify methods that have been used successfully as well as possible patterns in the current literature, and the need for future research.

54 peer-reviewed articles were included in the integrative review. 43 of the included articles were qualitative, six quantitative and five used mixed methods. Most studies were conducted in Denmark, four originated from the Netherlands, four were based in Europe and one was from Australia. Five themes were identified:

- The family caring responsibility
- Communication, information and emotional support
- Understanding the importance of family involvement in patient care
- Barriers to family involvement
- Effective strategies to promote family health

## **The family caring responsibility**

The caring responsibility that children and young adults experience can negatively affect their own life and their relationship to parents or family members. They experience concerns, stress overload affecting their mental health, as well as bodily strains (1-4). Caregivers experience feeling emotionally burdened and scared when suddenly being responsible for the sick individual. They also feel alone and, in some cases, overlooked by healthcare professionals and family (5-7). Healthcare professionals should approach them with recognition, empathy and an open-minded attitude. Generally, it is important for health professionals to pay attention to the family situation and support accordingly (2-4, 8).





Older people who are relating on their children or family to provide care, express how the caring responsibility negatively affects their relationships in different ways. It is important for children and other caregivers to be involved and acknowledged when planning care and treatment, and to perhaps together with healthcare workers, make an agreement related to the caring responsibility, to prevent any blurred lines and uncertainty, when it comes to the shared responsibility (1, 9).

### **Communication, information and emotional support**

Caregivers express a need for support (7, 10-13). However, the need for support is individual for each family and family member. Therefore, a family-centered healthcare approach would provide a greater understanding of the individual caregiver and the kind of support that is needed (5, 11, 14). Some studies refer to peer-to-peer support groups as a source to emotional support with the potential to improve the return to everyday life after the disease process (15, 11). Besides support, several studies emphasize the importance of receiving information and education, for instance through nursing conversations, to provide quality care, reduce caregiver burden and to promote everyday life within the family (5-7, 10-12). Communication and information regarding disease, participation in treatment and emotional support is essential for both patient and caregiver (8, 11, 16-19). Broekema et al. (5) find that open and structured conversations with nurses and other professionals involved in the caretaking, contribute to the feeling of an increased overview and mutual understanding, that in the end result in a reduced burden for family members and improved quality of care for the patient.



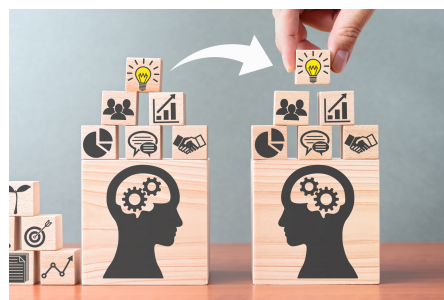
### **Understanding the importance of family involvement in patient care**

There is a general agreement in the literature, that healthcare professionals are responsible for assessing the individual needs of patients as well as caregivers, and providing suitable support (8, 16-18, 20).

The quality of care depends on the whole collaboration between healthcare professionals, patient and family caregiver (11, 17, 21). However, there is a significant difference in nurses' attitudes towards family importance in nursing care (22-24). One study found that less than half of the nurses considered family as a collaboration partner (24). Factors like age, country, level of education and work setting have been found to have an impact on the attitude (23-25). As a possible respond to this tendency, several studies state the need to enhance the knowledge of family importance and family involvement in patient care by educating healthcare professionals in a family centered healthcare approach (9, 23-27).

### **Barriers to family involvement**

Some of the included articles examine which potential barriers can challenge or hinder the use of family involvement in practice. Healthcare professionals working within organizations without general approaches to family-centered care or organizations that do not encourage a family-centered approach are more negative towards including family in patient care (23, 28). High workload, time pressure and organizational needs of productivity were found to be barriers for communicating to and involving family caregivers in patient care (29, 30). Other identified barriers were healthcare professional's lack of knowledge, competence and education (26, 28, 30).





### **Effective strategies to promote family health**

Østergaard et al. (22) describe the effect of family nursing therapeutic conversations on patients with heart failure and their family members. Both patients and families reported positive results following the intervention such as increased reinforcement, decision-making capability and collaboration with the nurse. Broekema et al. (5) also studied the benefits of family nursing conversations and found that the nursing conversations contributed to reducing caregiver burden and improved the quality of care.

A pilot study developing video resources to reduce the burden of caring for persons with cancer found, that the digital educational material available online, was an effective complement to evidence-based health information (31). Producing disease information and education that is available from home is highly relevant when considering the information need that caregivers express in several of the included articles (5-7, 10-12).

Advanced care planning can help patients to make shared decisions about treatment and their everyday life (21, 32). Allowing patients to participate in the decision-making can be empowering and contribute to their feeling of autonomy (32).

The multimodal rehabilitative palliative care program was found to be feasible for high grade glioma patients (15). The program provided patients and families with information and facilitated discussions among peers, as well as strategies to manage future challenges. The results showed strengthened social well-being and the value of individualized information (15).



## Future research

The analysis of the literature shows a general agreement among caregivers and patients across various medical specializations and populations, about what is needed to prevent the disease from further burdening the surrounding family and promotes a more holistic and cooperative approach (6-8, 10, 12-14, 16-20). Also, studies have identified factors that impact nurses' attitudes towards family involvement in healthcare (3, 23, 24, 26) and potential barriers to the family centered approach (23, 26, 28-30). However, several articles stress the need for future research to focus on the existing gap between the needs of patients and caregivers and the healthcare that is actually being delivered. More specifically they express the need for family focused research across multiple specialties, and the development and implementation of family interventions, tailored to the family as a unit of care, and with focus on technical solutions to support a person-centered and family-centered informative approach (12, 15, 26, 27, 29). Also, future studies should investigate the in-depth collaboration between patients, caregivers and healthcare professionals about treatment decisions, its relationship to treatment expectations, end of life discussions and other relevant subjects (15, 20, 26).



# CURRENT RESEARCH PROJECTS

*In FaCe we have 10 ongoing research projects affiliated.*

On the following pages you can get an overview of the projects affiliated to FaCe in 2022. On page 7 and 8 two of the projects affiliated to FaCe are presented.



## **GAIN - Gastrointestinal Diseases and Malformations in Infancy and Childhood - From fetus to infant – counseling of parents with a child suffering from gastroschisis, omphalocele or esophagus atresia**

Center of excellence – Obstetric/Fetal, Pediatric/Neonatal and Surgical departments at OUH and SDU.

Involved in the projects from FaCe: Ellen Aagaard Nøhr and Gitte Zachariassen.

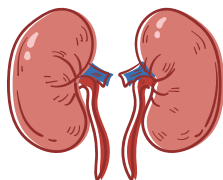


## **The ACE study - improving outcomes by person-family centered assessment and tailored care for adults and families discharged from the Emergency Department within 24 hours**

Principal investigator: Christina Østervang, PhD student

Main supervisor: AnnMarie Lassen

Co-supervisors: Charlotte Myhre, Karin B. Dieperink and Elisabeth Coyne



## **Advance Care Planing in Chronic kidney care**

Principal invstigator: Christina Egmose Frandsen, PhD student

Main supervisor: Hanne Agerskov

Co-supervisors: Hans Dieperink and Bettina Trettin



## **We want to be a family - Children and adolescents with cancer and their families**

Principal investigator: Camilla Littau Nielsen, PhD student

Main supervisor: Jane Clemensen

Co-supervisors: Kristina Garne Holm, Claus Sixtus Jensen, Michael Thude Callesen.

Patient representative: Ditte Magnusson and Mette Vedtofte



## **The famko project - a collaborative intervention project between the municipality of Odense and the Family Clinic OUH to support wellbeing of vulnerable women, families and their children**

Principal investigator: Lene Nygaard

Ellen Aagaard Nøhr, Dorthe Nielsen, Deborah Davis

# CURRENT RESEARCH PROJECTS



## **Polypharmacy and medication safety in vulnerable older migrants with cognitive disorders – A multi method project**

Principal investigator: Camilla Lynnerup, PhD student

Main supervisor: Dorthe S. Nielsen

Co-supervisor: Morten Sodemann, Anton Pottegård, Charlotte Rossing



## **Telepalliative Care**

Principal investigator: Eithne Hayes Bauer, PhD student

Main supervisor: Karin B. Dieperink

Co-supervisors: Georg Bollig, Frans Brandt Kristensen and Anthony Smith



## **The multilingual encounter.**

Principal investigator: Lisbeth Birkelund, PhD student

Main Supervisor: Dorthe Nielsen

Co-supervisor: Morten Sodemann, Karin B. Dieperink and Johanna Lindell



## **Promoting hand use in infants at risk of cerebral palsy by early intervention**

Principal investigator: Helle Sneftrup Poulsen

Main supervisor: Lisbeth Rosenbek Minet

Co-supervisors: Alice Ørts, Charlotte Ytterberg, Hanne Lauridsen



## **eHealth intervention for spiritual well-being in people suffering from cancer**

Principal investigator: Maiken Langhoff Kidholm, PhD Student

Main supervisor: Niels Christian Hvidt

Co-supervisors: Karin Dieperink, Ricko Nissen and Jens Søndergaard

# SPEAKING DIFFERENT LANGUAGES NOT ONLY HAS CONSEQUENCES FOR THE PATIENT AND HEALTHCARE PROFESSIONALS BUT FOR THE FAMILY



PhD student Lisbeth Birkelund

Lisbeth Birkelund is Master of Arts in English and Nordic Languages and Literature and has worked as a language teacher for several years. A profound interest in language-based inequality led to her PhD project in which she investigates the impact of language on encounters between healthcare professionals and patients from ethnic minority backgrounds with limited Danish proficiency and cancer.

Putting patients first can be difficult without a shared language, and language barriers can have major consequences for the patient who speaks little or no Danish.

**Language barriers not only impact negatively on patients and healthcare professionals but on family members who often have an important role in making communication possible.**

However, language barriers not only impact negatively on patients and healthcare professionals but on family members who often have an important role in making communication possible. Therefore, the project is affiliated to FaCe.

Language barriers not only impact negatively on patients and healthcare professionals but on family members who often have an important role in making communication possible.

In the first study, we use participant observations to examine the communication that takes place during consultations and chemotherapy treatments at the Department of Oncology at Vejle Hospital and Odense University Hospital, Denmark

. In the second study, we interview the patients and the family members who want to participate to provide knowledge about how they experience the communication as well as to gain insight into their basic human conditions. The importance of speaking mother tongue, not least when being seriously ill, is directly addressed in the second study in which the patients are invited to further express themselves through diary narratives. In the final study, the healthcare professionals will be invited for focus group interviews to get their perspective on the impact of language barriers. Both the patient, family, and healthcare professional perspective will be used to improve the communication processes in multilingual healthcare encounters with respect to both the importance and consequences of speaking mother tongue.

The project is financed by the University of Southern Denmark, Odense University Hospital, and the Danish foundation, Østifterne.



# TELEMEDICINE IN PALLIATIVE CARE

Eithne Hayes Bauer's is Master of Science in Nursing. Her Ph.D. project is affiliated with FaCe and entitled **'Telemedicine in palliative care – A model of care based on stakeholders' perspectives and the core competencies of palliative care'**, is divided into three sub-studies.



PhD student Eithne Hayes Bauer.

The overall aim is to develop a model of care for telemedicine in palliative care (telepalliative care), that can guide and support healthcare workers in providing tailor-made patient- and family-centered palliative care in a virtual context. The first study is a review of the evidence that takes a look at patients' and families' perspectives on telepalliative care over the last 10 years in high-income, middle-income, and low-income countries. Eithne and the research group hope to gain valuable information about the needs of families, how and when telemedicine works best for them, and what barriers still exist to families' adoption of telepalliative care. The group published a protocol for the review in 2022 and expects to publish the results of the review early next year. Drawing on these results, the second study will be carried out at the Hospital of Southern Denmark, Sønderborg, and Odense University Hospital. Patients, families, and healthcare professionals will be invited to take part in interviews and focus groups about their experiences with telepalliative care. Field observations will also be performed to observe how palliative care is delivered in a virtual context. In the third study, which will combine the results of the previous studies, patients, families, and healthcare workers will be invited to participate in workshops to develop a proposal for a model of telepalliative care.

The project is financed by Grant from University of Southern Denmark, Grant from Hospital of Southern Denmark, and "Knud og Edith Eriksens Mindefond".

# STEERING GROUP

The steering group of FaCe is presented below. The steering group met every quarter in the past year.



**Karin B. Dieperink**  
Head of research  
Professor



**Jens Søndergaard**  
Professor



**Dorthe Nielsen**  
Professor



**Ellen Nøhr**  
Professor



**Hanne Agerskov**

Associate professor



**Gitte Zachariassen**

Professor



**Britt Borregaard**

Associate professor



**Trine Munk-Olsen**

Professor



**Lisbeth R. Minet**  
Professor



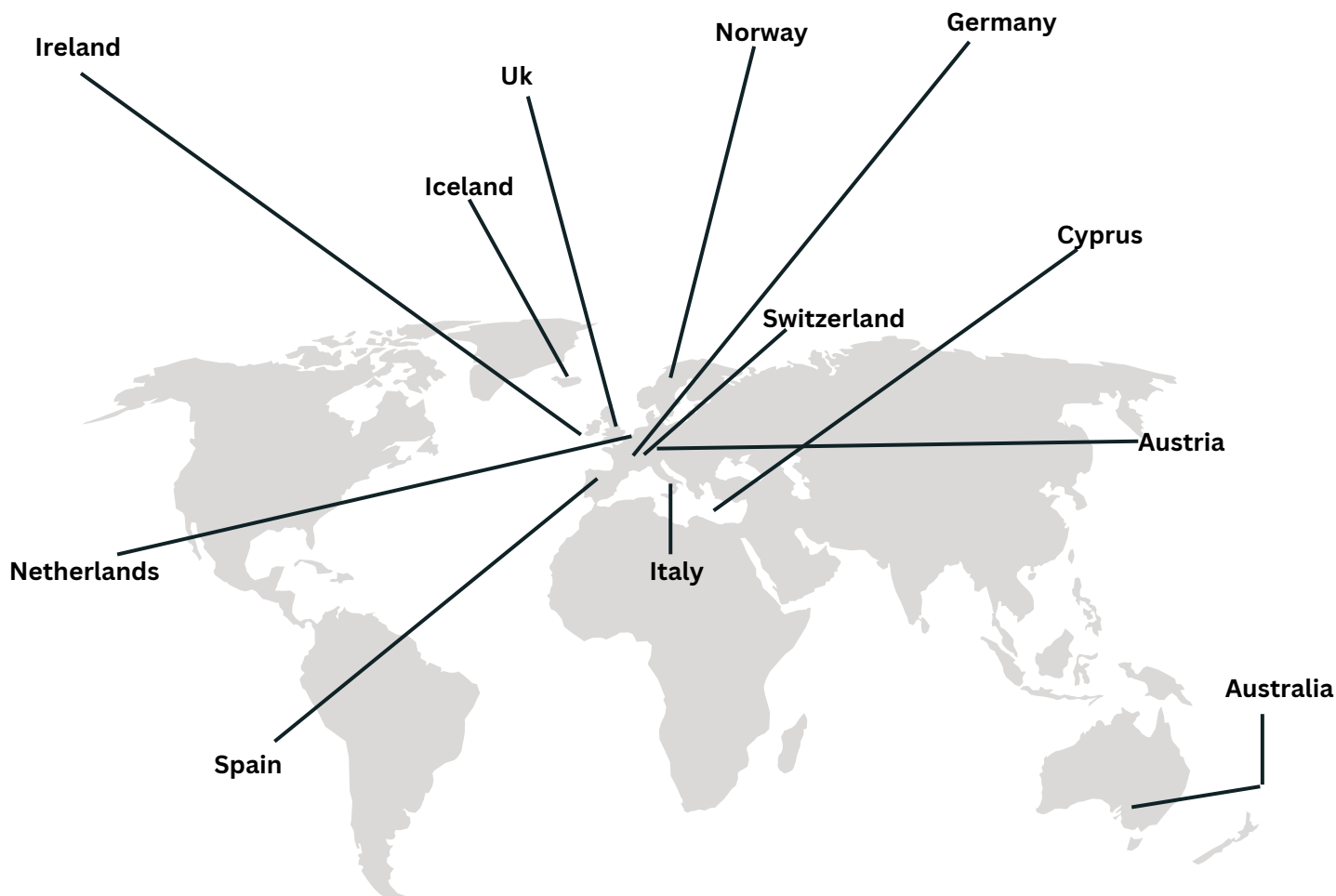
**Dorte Toudal Viftrup**  
Associate professor



**Anne M. Clausen**  
Scientific assistant



**Elisabeth Coyne**  
Adj. Associate Professor



## GLOBAL COLLABERATION

FaCe aims to build fruitful collaborations and partnerships between national and international researchers, clinicians, patients and families across healthcare sectors in order to increase and coordinate research and clinical practice in the field of family health and well-being, not only during hospitalization but in everyday life. Consecutively add to more knowledge that may influence clinical practice of different professionals who are providing support in the first line of health care to patients and families. At the geographical map above you can see some of our global collaberation the past year.

## PUBLICATIONS 2022

Agerskov H, Thiesson HC, Pedersen BD. Parenting a child with a kidney transplant – A study of everyday life experiences. *Journal of Renal Care*, 2022 Feb 1. <https://doi.org/10.1111/jorc.12410>. Online ahead of print

Rossau HK, Kjerholt M, Brochmann N, Tang LH, Dieperink KB. Daily living and rehabilitation needs in patients and caregivers affected by myeloproliferative neoplasms (MPN): A qualitative study. *Journal of Clinical Nursing*. 2022 apr.;31(7-8):909-921. <https://doi.org/10.1111/jocn.15944>

Coyne E, Winter N, Carlini J, Robertson J, Dieperink K. Developing video resources to reduce the burden of caring for persons with brain cancer. *European Journal of Oncology Nursing*. 2022 okt.;60. 102187. <https://doi.org/10.1016/j.ejon.2022.102187>

Nordentoft S, Dieperink KB, Johansson SD, Jarden M, Piil K. Evaluation of a multimodal rehabilitative palliative care programme for patients with high-grade glioma and their family caregivers. *Scandinavian Journal of Caring Sciences*. 2022 sep.;36(3):815-829. <https://doi.org/10.1111/scs.13019>

Cromhout PF, Christensen AV, Jørgensen MB, Ekholm O, Juel K, Svendsen JH et al. Exploring the use of psychotropic medication in cardiac patients with and without anxiety and its association with 1-year mortality. *European Journal of Cardiovascular Nursing*. 2022 aug.;21(6):612-619. <https://doi.org/10.1093/eurjcn/zvab111>

Mahrer-Imhof R, Østergaard B, Brødsgaard A, Konradsen H, Svavarsdóttir EK, Dieperink KB et al. Healthcare practices and interventions in Europe towards families of older patients with cardiovascular disease: A scoping review. *Scandinavian Journal of Caring Sciences*. 2022 jun.;36(2):320-345. <https://doi.org/10.1111/scs.13045>

Crawley C, Sander SD, Nohr EA, Lillevang ST, Andersen A-MN, Murray J et al. High Prevalence of Celiac Disease Among Danish Adolescents: A Population-based Study. *Journal of Pediatric Gastroenterology and Nutrition*. 2022 jan.;74(1):85-90. <https://doi.org/10.1097/MPG.0000000000003247>

Kirkegaard J, Lundholm BW, Rosenberg T, Lund T, Gundesen MT, Dieperink KB. Home is best. Self-administration of subcutaneous Bortezomib at home in patients with multiple myeloma - A mixed method study. *European journal of oncology nursing : the official journal of European Oncology Nursing Society*. 2022 okt. 1;60. 102199. <https://doi.org/10.1016/j.ejon.2022.102199>

Pezzella A, Pistella J, Baiocco R, Kouta C, Rocamora-Perez P, Nielsen D et al. IENE 9 project: Developing a culturally competent and compassionate LGBT + curriculum in health and social care education. *Journal of Gay & Lesbian Mental Health*. 2022 jan. 10. <https://doi.org/10.1080/19359705.2021.2012733>

Sørensen J, Nielsen DS, Pihl GT. It's a hard process – nursing students' lived experiences leading to dropping out of their education. A qualitative study. *Nurse Education Today*. 2022 feb. 7. <https://doi.org/10.1016/j.nedt.2023.105724>

Baiocco R, Pezella A, Pistella J, Kouta C, Rousou E, Rocamora-Perez P et al. LGBT+ Training Needs for Health and Social Care Professionals: A Cross-cultural Comparison Among Seven European Countries. *Sexuality Research and Social Policy* . 2022 mar.;19(1):22-36. <https://doi.org/10.1007/s13178-020-00521-2>

Shamali M, Esandi Larramendi N, Østergaard B, Barbieri-Figueiredo M, Brødsgaard A, Canga-Armayor A et al. Nurses' attitudes towards family importance in nursing care across Europe. *Journal of Clinical Nursing*. 2022 jul. 11. <https://doi.org/10.1111/jocn.16456>

Rosenkilde, S., Missel, M., Wagner, M. K., Dichman, C., Hermansen, A. S., Larsen, M. K., Joshi, V. L., Zwisler, A. D. & Borregaard, B. Caught between competing emotions and tensions while adjusting to a new everyday life: a focus group study with family caregivers of out-of-hospital cardiac arrest survivors. *European Journal of Cardiovascular Nursing*. (2022) 00, 1–8 <https://doi.org/10.1093/eurjcn/zvac056>

Ikander T, Raunkiær M, Hansen O, Dieperink KB. Nurses' involvement in end-of-life discussions with incurable cancer patients and family caregivers - An integrative review. *Palliative & Supportive Care*. 2022 aug. 22;20(4):570-581. <https://doi.org/10.1017/S1478951521000596>

Ikander T, Dieperink KB, Hansen O, Raunkiær M. Patient, Family Caregiver, and Nurse Involvement in End-of-Life Discussions During Palliative Chemotherapy: A Phenomenological Hermeneutic Study. *Journal of Family Nursing*. 2022 feb.;28(1):31-42. <https://doi.org/10.1177/10748407211046308>

Frandsen CE, Dieperink H, Detering K, Agerskov H. Patients' with chronic kidney disease and their relatives' perspectives on advance care planning: A meta-ethnography. *Journal of Renal Care*. 2022 sep.;48(3):154-167. <https://doi.org/10.1111/jorc.12399>

Nielsen DS. Professor: Pårørende til ikke-vestlige ældre løfter bekymrende tung omsorgsbyrde. *Altinget.dk*. 2022 feb. [Link](#)

Brylle MO, Rasmussen TB, Mols R, Thrysoe L, Hansen KN, Diederichsen A et al. The association between health-related quality of life, self-reported characteristics and 1- and 3-year mortality amongst cardiac patients with and without type 2 diabetes. *Quality of Life Research*. 2022 aug. 15. <https://doi.org/10.1007/s11136-022-03223-x>

Larsen MS, Agerskov H. The importance of an outdoor playground for children with epilepsy and their family during and after hospitalization: A qualitative study of parents' experiences. *Journal of Pediatric Nursing*. 2022 jul. 11;66:e16-e21. <https://doi.org/10.1016/j.pedn.2022.07.001>

Larsen MK, Mikkelsen R, Budin SH, Lamberg DN, Thrysoe L, Borregaard B. With Fearful Eyes: Exploring Relatives' Experiences With Out-of-Hospital Cardiac Arrest: A Qualitative Study. *The Journal of Cardiovascular Nursing*. 2022 jan. 27. <https://doi.org/10.1097/JCN.0000000000000893>

# BOOK CHAPTERS 2022

Rottmann N. Norup A. Dieperink KB. Textbook of Applied Medical Psychology: Red. Susanne S. Pedersen, Kirsten K. Roessler, Tonny Elmoose Andersen, Anna Thit Johnsen, Frans Pouwer. Chapter 15. **Informal Caregiving in Life-Threatening or Chronic Illness**. Peer-Reviewed. 2022





# CONFERENCE CONTRIBUTION 2022

Nielsen SS, Skou ST, Larsen AE, Vægter HB, Polianskis R, Simony C et al.. **Ergoterapi i den tværfaglige behandling af kroniske smerter– erfaringer fra en pilotafprøvning [Occupational therapy in multidisciplinary chronic pain treatment - experiences from a feasibility study]**. 2022. Paper præsenteret ved Ergo22: Styrket forskning - styrket praksis, Nyborg, Danmark.

Birkelund L, Dieperink KB, Sodemann M, Lindell J, Dahl Steffensen K, Nielsen DS. **Healthcare encounters with older patients with cancer and limited dominant language proficiency**. Digital Abstract Book of the European Geriatric Medicine (EGM) Journal. 2022 jul. 19.

Birkelund L, Dieperink KB, Sodemann M, Lindell J, Dahl Steffensen K, Nielsen DS. **Language barriers in healthcare encounters with ethnic minority cancer patients**. 2022. Abstract fra Nationalt virtuelt symposium: Supportive & Palliative Care in Cancer, Danmark.

Sara Stage Voetmann, Niels Christian Hvidt, Ricko Damberg Nissen (Medlem af forfattergruppering), Jens Søndergaard (Medlem af forfattergruppering), Dorte Toudal Viftrup

**Existential and spiritual care for and communication with children and youth who are relatives of life-threatened and dying family members**. Nordisk Fagkonferanse i Eksistentiell Helse: Climate Psychology. Existential Helath and Sustainable Future - Honne, Norway

Marcussen J, Bonner A, Madsen R, Agerskov H. **Loss, grief and care - Nursing competence development targeted for patients receiving hemodialysis and their families**. European Grief Conference, Copenhagen, September 2022.

Birkelund L, Dieperink KB, Sodemann M, Lindell J, Dahl Steffensen K, Nielsen DS. **The Multilingual Encounter in the Danish Healthcare System: an upcoming PhD study**. International Journal of Integrated Care (IJIC) . 2022 feb. 7;22:138. <http://doi.org/10.5334/ijic.ICIC22061>



PhD student Lisbeth Birkelund at European Geriatric Medicine Society conference 2022 in London with a poster entitled "Healthcare encounters with older patients with cancer and limited dominant language proficiency"

# CONFERENCE CONTRIBUTION 2022

## Oral presentations

Marcussen J, Bonner A, Madsen R, Agerskov H. **Tab og sorg – Udvikling af omsorg til patienter i hæmodialyse og deres familier.**

Faglig sammenslutning for Nyremedicinske sygeplejersker i Danmark. Copenhagen, November 2022.

Frandsen C, Dieperink H, Agerskov H. **Perspektiver på Advance care planning blandt patienter med kronisk nyresvigt og deres familier – en meta-etnografi.** Faglig sammenslutning for Nyremedicinske sygeplejersker i Danmark. Copenhagen, November 2022.

Agerskov H, Bonner A, Madsen R, Marcussen J. **Experiences of loss and grief among patients receiving haemodialysis and their family members.**

European Dialysis and Transplant Nurses Association (EDTNA/ERCA) conference, Rotterdam, The Netherlands, September 2022.

Marcussen J, Bonner A, Madsen R, Agerskov H. (presenting author). **Loss, grief and care – nursing competence development for adults receiving haemodialysis and their families.** European Dialysis and Transplant Nurses Association (EDTNA/ERCA) conference, Rotterdam, The Netherlands, September 2022.

Frandsen C, Dieperink H, Agerskov H. **Perspectives on advance care planning among patients' with chronic kidney disease and their families.**

European Dialysis and Transplant Nurses Association (EDTNA/ERCA) conference, Rotterdam, The Netherlands, September 2022.

Dieperink KB. Samarbejde med familie og på tværs. Invited speaker.

Sygeplejerskernes fagdag 3. Maj 2022. Sundhed og Ældre, Horsens Kommune.

Dieperink KB. Familiesygepleje. Invited Speaker

Nationalt netværk for Forløbskoordinatorer. 10 Juni 2022. Koldingfjord.

Sørensen J, Pihl GT, Nielsen DS. **It's a hard process - nurse students' lived experience leading to dropping out of education. A qualitative study.** 2022.

Abstract fra Forskningsformidling på 1000 måder: DASYS Forskningsråd, Kolding, Danmark.

# REFERENCE LIST

1. Andersen HE, Hoeck B, Nielsen DS, Ryg J, Delmar C. (2020a). Caring responsibility from the perspectives of older persons whose adult children are their caregivers. *International journal of older people nursing*, 15(4), e12335. <https://doi.org/10.1111/opn.12335>
2. Marcussen J, Thuen F, O'Connor M, Wilson RL, Hounsgaard L. (2020). Double bereavement, mental health consequences and support needs of children and young adults-When a divorced parent dies. *Journal of clinical nursing*, 29(7-8), 1238–1253. <https://doi.org/10.1111/jocn.15181>
3. Van der Werf HM, Paans W, Emmens G, Francke AL, Roodbol PF, Luttik MLA. (2020a). Expectations and Prospects of Young Adult Caregivers Regarding the Support of Professionals: A Qualitative Focus Group Study. *International journal of environmental research and public health*, 17(12), 4299. <https://doi.org/10.3390/ijerph17124299>
4. Van der Werf HM, Paans W, Emmens G, Francke AL, Roodbol PF, Luttik MLA. (2020b). Experiences of Dutch students growing up with a family member with a chronic illness: A qualitative study. *Health & social care in the community*, 28(2), 624–632. <https://doi.org/10.1111/hsc.12896>
5. Broekema S, Paans W, Oosterhoff AT, Roodbol PF, Luttik MLA. (2021). Patients' and family members' perspectives on the benefits and working mechanisms of family nursing conversations in Dutch home healthcare. *Health & social care in the community*, 29(1), 259–269. <https://doi.org/10.1111/hsc.13089>
6. Rosenkilde S, Missel M, Wagner MK., Dichman C, Hermansen AS, Larsen MK, Joshi VL, Zwisler AD, Borregaard B. (2022). Caught between competing emotions and tensions while adjusting to a new everyday life: a focus group study with family caregivers of out-of-hospital cardiac arrest survivors. *European journal of cardiovascular nursing*, zvac056. Advance online publication. <https://doi.org/10.1093/eurjcn/zvac056>
7. Andersen NI, Nielsen CI, Danbjørg DB, Møller PK, Brochstedt DK. (2019). Caregivers' Need for Support in an Outpatient Cancer Setting. *Oncology nursing forum*, 46(6), 757–767. <https://doi.org/10.1188/19.ONF.757-767>
8. Petersen JJ, Østergaard B, Svavarsdóttir EK, Rosenstock SJ, Brødsgaard A. (2021). A challenging journey: The experience of elderly patients and their close family members after major emergency abdominal surgery. *Scandinavian journal of caring sciences*, 35(3), 901–910. <https://doi.org/10.1111/scs.12907>

# REFERENCE LIST

9. Andersen HE, Hoeck B, Nielsen DS, Ryg J, Delmar C. (2020b). Older ill persons' and their adult children's experiences with primary healthcare: A reflective lifeworld research approach. *Nordic Journal of Nursing Research*, 41(2):65-76. doi:10.1177/2057158520966754
10. Agerskov H, Thiesson HC, Pedersen BD. (2022). Parenting a child with a kidney transplant-A study of everyday life experiences. *Journal of renal care*, 10.1111/jorc.12410. Advance online publication. <https://doi.org/10.1111/jorc.12410>
11. Larsen MK, Mikkelsen R, Budin SH, Lamberg DN, Thrysoe L, Borregaard B. (2022). With Fearful Eyes: Exploring Relatives' Experiences With Out-of-Hospital Cardiac Arrest: A Qualitative Study. *The Journal of cardiovascular nursing*, 38(1), E12–E19. <https://doi.org/10.1097/JCN.0000000000000893>
12. Mahrer-Imhof R, Østergaard B, Brødsgaard A, Konradsen H, Svavarsdóttir EK, Dieperink KB, Imhof L, García-Vivar C, Luttik ML. (2022). Healthcare practices and interventions in Europe towards families of older patients with cardiovascular disease: A scoping review. *Scandinavian journal of caring sciences*, 36(2), 320–345. <https://doi.org/10.1111/scs.13045>
13. Agerskov H, Thiesson HC, Pedersen BD. (2021). Siblings of children with chronic kidney disease: A qualitative study of everyday life experiences. *Journal of renal care*, 47(4), 242–249. <https://doi.org/10.1111/jorc.12389>
14. Larsen MS, Agerskov H. (2022). The importance of an outdoor playground for children with epilepsy and their family during and after hospitalization: A qualitative study of parents' experiences. *Journal of pediatric nursing*, 66, e16–e21. <https://doi.org/10.1016/j.pedn.2022.07.001>
15. Nordentoft S, Dieperink KB, Johansson SD, Jarden M, Piil K. (2022). Evaluation of a multimodal rehabilitative palliative care programme for patients with high-grade glioma and their family caregivers. *Scandinavian journal of caring sciences*, 36(3), 815–829. <https://doi.org/10.1111/scs.13019>
16. Coyne E, Heynsbergh N, Dieperink KB. (2020). Acknowledging cancer as a family disease: A systematic review of family care in the cancer setting. *European journal of oncology*

# REFERENCE LIST

17. Frandsen CE, Pedersen EB, Agerskov H. (2020). When kidney transplantation is not an option: Haemodialysis patients' and partners' experiences-A qualitative study. *Nursing open*, 7(4), 1110–1117. <https://doi.org/10.1002/nop2.487>
18. Rossau HK, Kjerholt M, Brochmann N, Tang LH, Dieperink KB. (2022). Daily living and rehabilitation needs in patients and caregivers affected by myeloproliferative neoplasms (MPN): A qualitative study. *Journal of clinical nursing*, 31(7-8), 909–921. <https://doi.org/10.1111/jocn.15944>
19. Østervang C, Lassen AT, Jensen CM, Coyne E, Dieperink KB. (2021). What are the needs and preferences of patients and family members discharged from the emergency department within 24 hours? A qualitative study towards a family-centred approach. *BMJ open*, 11(11), e050694. <https://doi.org/10.1136/bmjopen-2021-050694>
20. Agerskov H, Thiesson HC, Pedersen BD. (2020). The significance of relationships and dynamics in families with a child with end-stage kidney disease: A qualitative study. *Journal of clinical nursing*, 29(5-6), 987–995. <https://doi.org/10.1111/jocn.15170>
21. Frandsen CE, Dieperink H, Detering K, Agerskov H. (2022). Patients' with chronic kidney disease and their relatives' perspectives on advance care planning: A meta-ethnography. *Journal of renal care*, 48(3), 154–167. <https://doi.org/10.1111/jorc.12399>
22. Østergaard B, Mahrer-Imhof R, Shamali M, Nørgaard B, Jeune B, Pedersen KS, Lauridsen J. (2021). Effect of family nursing therapeutic conversations on patients with heart failure and their family members: Secondary outcomes of a randomised multicentre trial. *Journal of clinical nursing*, 30(5-6), 742–756. <https://doi.org/10.1111/jocn.15603>
23. Shamali M, Esandi LN, Østergaard B, Barbieri-Figueiredo M, Brødsgaard A, Canga-Armayor A, Dieperink KB, Garcia-Vivar C, Konradsen H, Nordtug B, Lambert V, Mahrer-Imhof R, Metzing S, Nagl-Cupal M, Imhof L, Svavarsdottir Ek, Swallow V, Luttik ML. (2022). Nurses' attitudes towards family importance in nursing care across Europe. *Journal of clinical nursing*, 10.1111/jocn.16456. Advance online publication. <https://doi.org/10.1111/jocn.16456>
24. Hagedoorn EI, Paans W, Jaarsma T, Keers JC, van der Schans CP, Luttik MLA. (2021). The importance of families in nursing care: attitudes of nurses in the Netherlands. *Scandinavian journal of caring sciences*, 35(4), 1207–1215. <https://doi.org/10.1111/scs.12939>

# REFERENCE LIST

25. Østergaard B, Clausen AM, Agerskov H, Brødsgaard A, Dieperink KB, Funderskov KF, Nielsen D, Sorknaes AD, Voltelen B, Konradsen H. (2020). Nurses' attitudes regarding the importance of families in nursing care: A cross-sectional study. *Journal of clinical nursing*, 29(7-8), 1290–1301. <https://doi.org/10.1111/jocn.15196>
26. Ikander T, Raunkiær M, Hansen O, Dieperink KB. (2021b). Nurses' involvement in end-of-life discussions with incurable cancer patients and family caregivers: An integrative review. *Palliative & supportive care*, 20(4), 570–581. <https://doi.org/10.1017/S1478951521000596>
27. Luttik ML. (2020). Family Nursing: The family as the unit of research and care. *European journal of cardiovascular nursing*, 19(8), 660–662. <https://doi.org/10.1177/1474515120959877>
28. Venø BL, Pedersen LB, Søndergaard J, Ertmann RK, Jarbøl DE. (2022). Assessing and addressing vulnerability in pregnancy: General practitioners perceived barriers and facilitators - a qualitative interview study. *BMC primary care*, 23(1), 142. <https://doi.org/10.1186/s12875-022-01708-9>
29. Østervang C, Lassen AT, Øelund K, Coyne E, Dieperink KB, Jensen CM. (2022). Health professionals' perspectives of patients' and family members' needs in emergency departments and patient pathway improvement: a qualitative study in Denmark. *BMJ open*, 12(2), e057937. <https://doi.org/10.1136/bmjopen-2021-057937>
30. Ikander T, Dieperink KB, Hansen O, Raunkiær M. (2021a). Patient, Family Caregiver, and Nurse Involvement in End-of-Life Discussions During Palliative Chemotherapy: A Phenomenological Hermeneutic Study. *Journal of family nursing*, 28(1), 31–42. <https://doi.org/10.1177/10748407211046308>



# SAVE THE DATE



Tuesday May 21 - Thursday May 23, 2024  
University of Southern Denmark  
Odense