

Two researchers win prestigious international scholarships

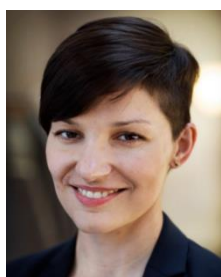
Assistant Professor Volha Lazuka and Associate Professor Elena Korchmina have both won the internationally recognized Marie Skłodowska-Curie Individual Fellowship and will collaborate with researchers at the Department of Business and Economics, SDU. The Marie Skłodowska-Curie Individual Fellowship is awarded to European research projects and is widely regarded as being one of Europe's most prestigious grants of its kind.

The scholarship is awarded to Volha Lazuka for conducting the project "The Dynamic Impacts of Child Health and Skills Enhanced by School Interventions across the Life" (DYNAMICS). Volha Lazuka will study the short- and long-term dynamic effects of health and human capital at school ages. The project combines research in the fields of economics and epidemiology to answer the overarching research question: How does the dynamics of a child's health and skills, enhanced by successive nationwide school reforms in mid-20th century Denmark translate into various later-life outcomes?

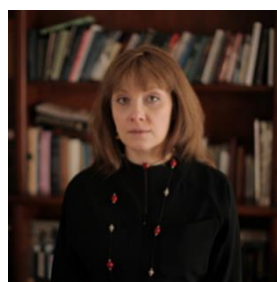
Volha is the holder of a Wallander and Hedelius Scholarship and has won several international prizes in her field. She came to the Department of Business and Economics from the Centre for Economic Demography at Lund University in Sweden.

Elena Korchmina's research project is entitled "Denmark and Russia: Why two Arctic empires developed so differently and continue to diverge?" (DEAR). The project will use a series of historic data to explore what accounts for the ultimately divergent pathways of the two empires as well as the rapid disintegration of the Danish Empire and the survival of the Russian Empire, given their initial similarities. The project contributes to initiating a new research agenda on the connections and subsequent divergence of the Russian and Danish Empires.

Elena is an economic historian from Russia, who comes to the Department of Business and Economics from the Higher School of Economics, Moscow.



Volha Lazuka, Assistant Professor



Elena Korchmina, Associate Professor

Volha and Elena will be mentored by, respectively, Professor Christian Møller Dahl and Professor Paul Sharp and will both be affiliated with the research units CPop (Interdisciplinary Centre on Population Dynamics) and HEDG (Historical Economics and Development Group).

Congratulations to Volha and Elena