



ROYAL DANISH DEFENCE COLLEGE

THE HUMAN FACTOR

- FROM TENERIFE TO HJELTEFJORDEN AND BEYOND

RASMUS DAHLBERG
ASSOCIATE PROFESSOR, PH.D.
CENTER FOR SOCIETAL SECURITY
ROYAL DANISH DEFENCE COLLEGE



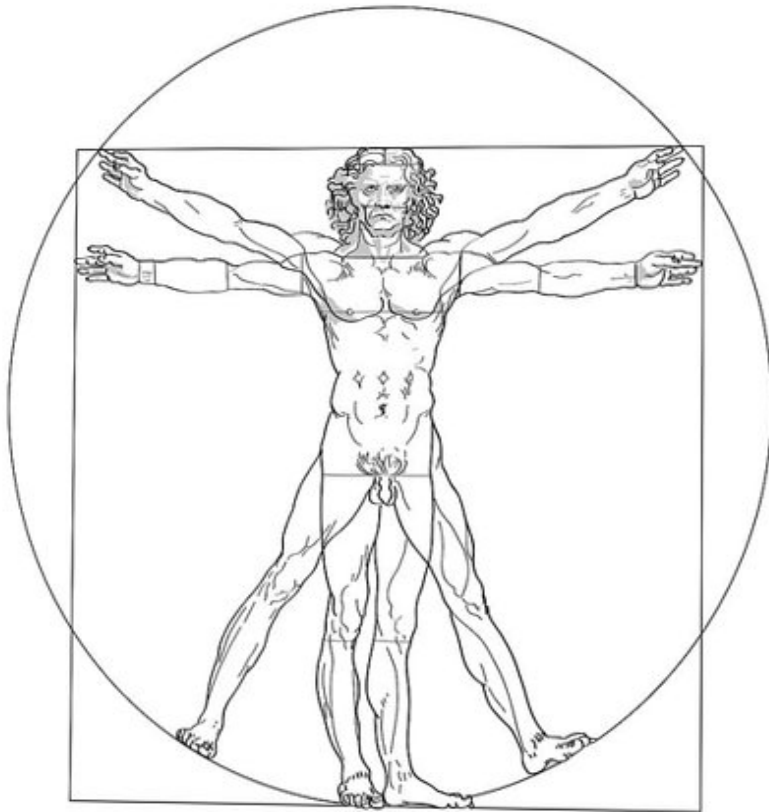


I WONDER WHAT THAT BUTTON DOES...





MAN AS MACHINE





IT'S JUST A MODEL...

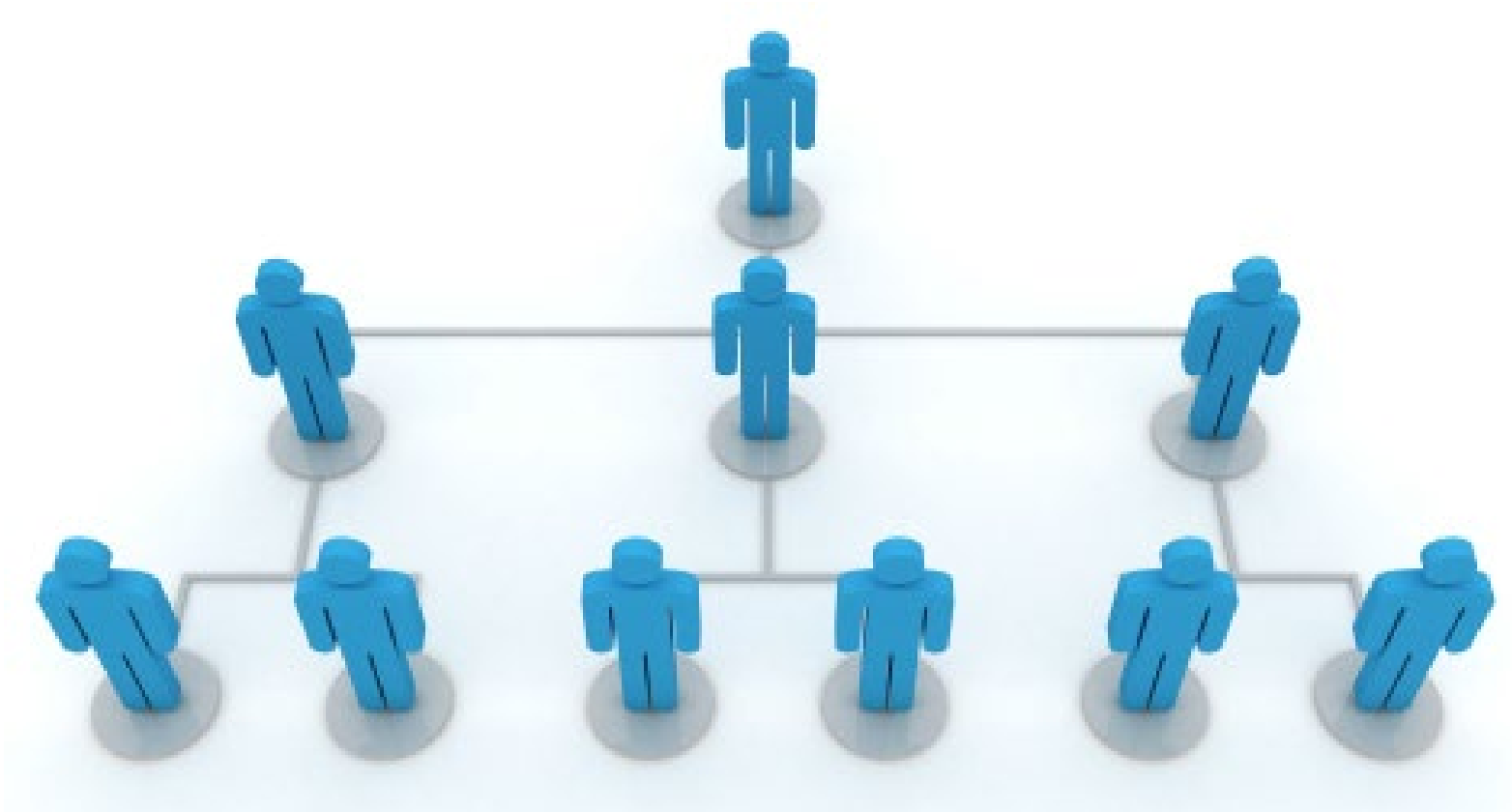


**"ALL MODELS ARE WRONG,
BUT SOME MODELS ARE USEFUL"**

GEORGE E.P. BOX (1919-2013)

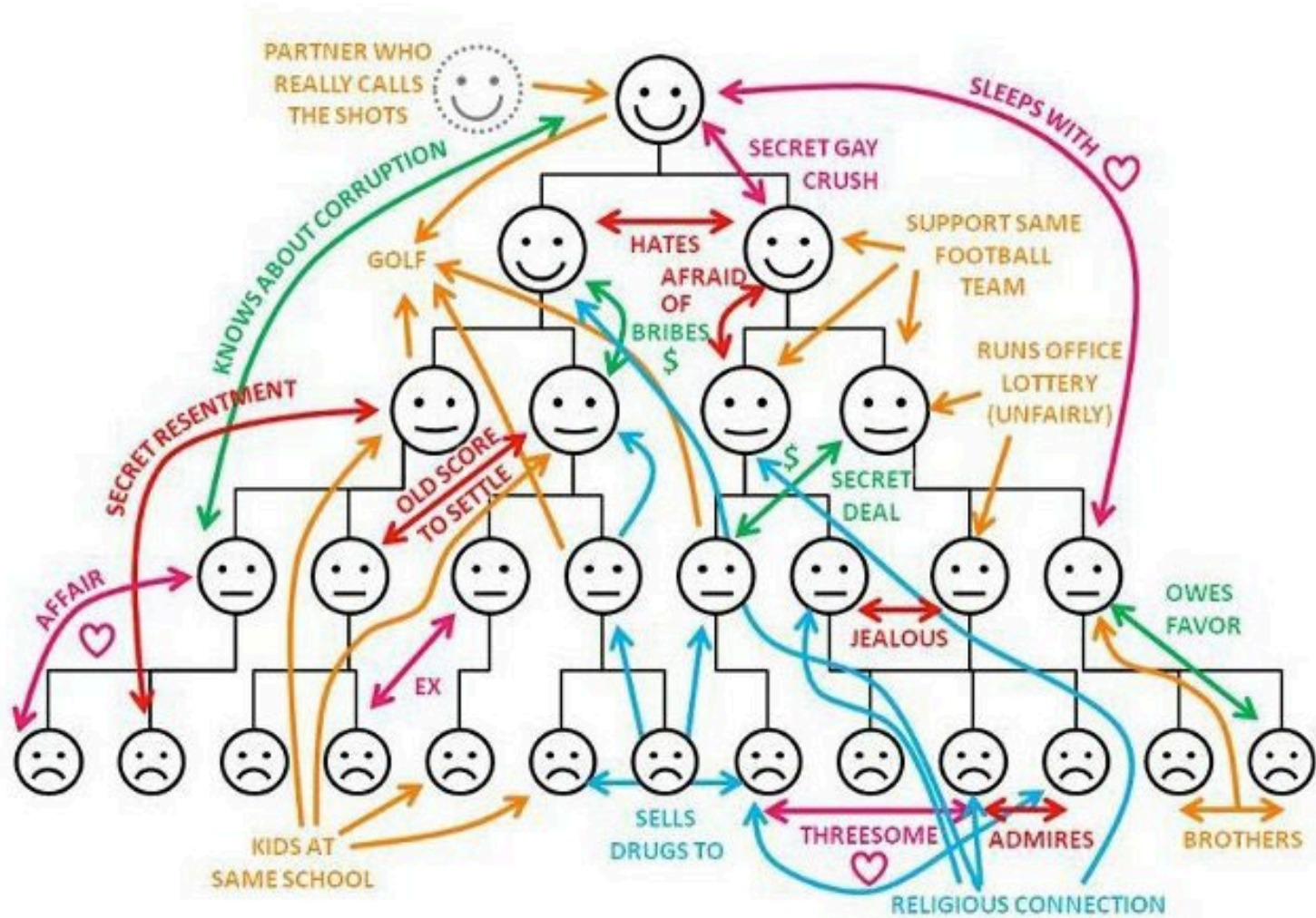


A MODEL



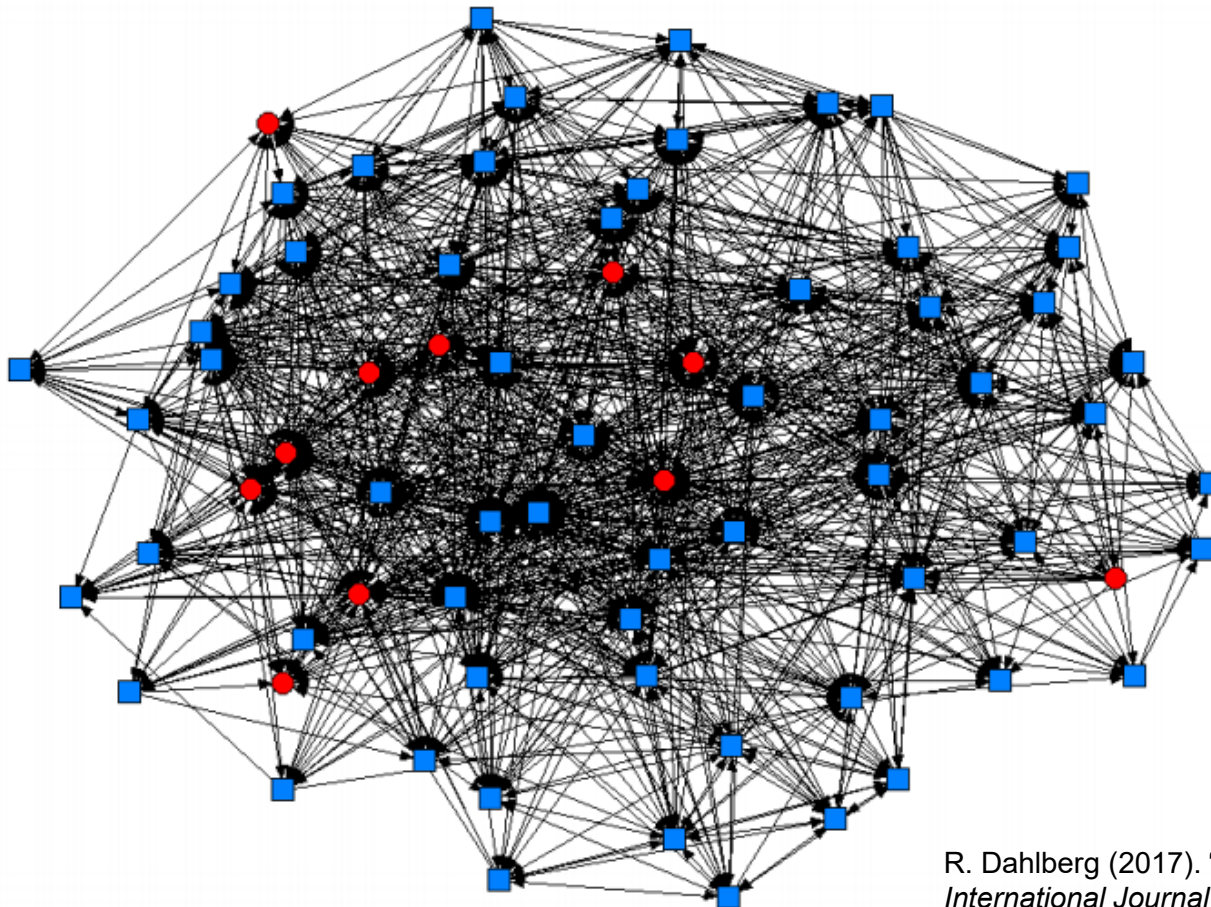


ANOTHER MODEL





AN INFORMAL NETWORK



R. Dahlberg (2017). "Who is in the Center?",
*International Journal of Emergency
Services*, 6, 1, 52-66



SAR IN REMOTE AREAS



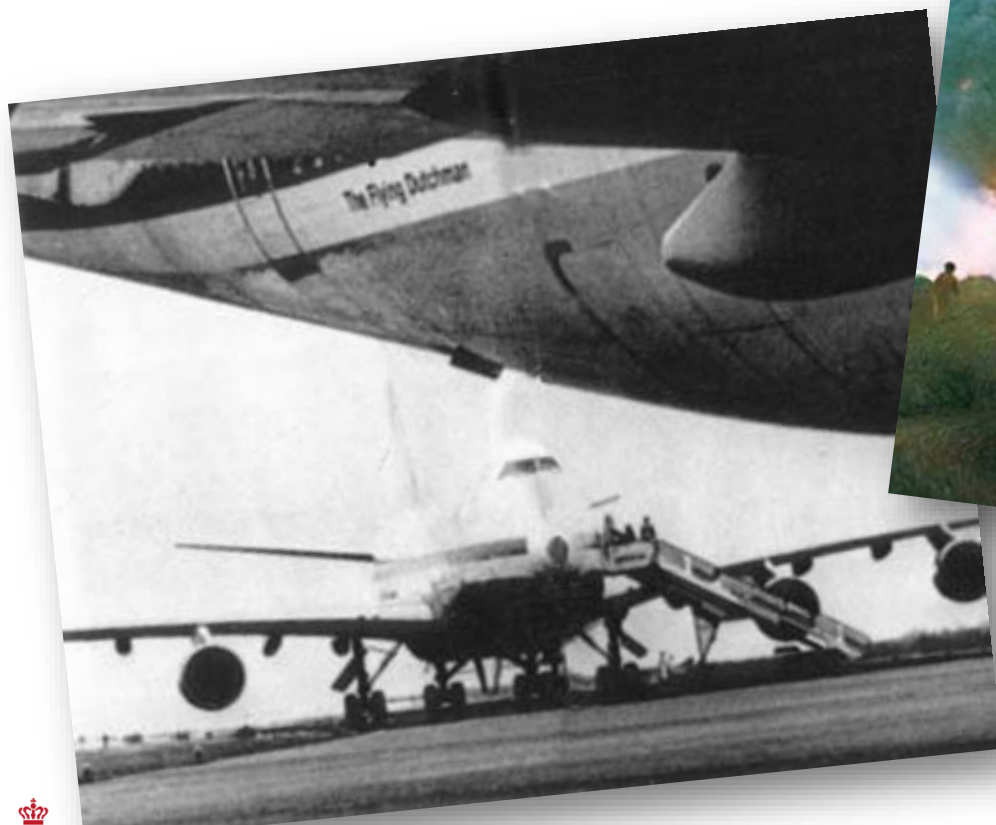
Ocean Explorer
aground in Alpefjord, Sep 2023



LIVEX16, 10 NM from Nuuk, June/July 2016



FROM TENERIFE...



KLM / Pan Am Boeing 747
runway collision, 1977



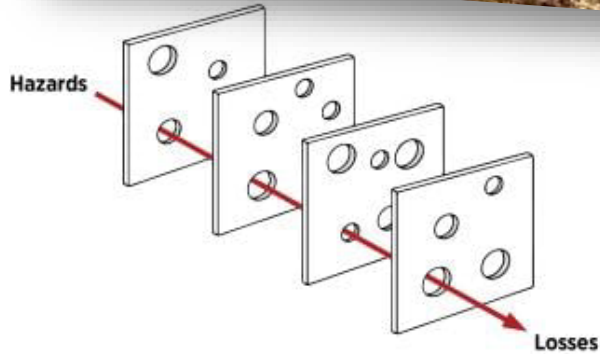
...TO HJELTEFJORDEN



HNoMS *Helge Ingstad*, Hjeltefjord, November 2018



THE CHEESE MAN'S LEGACY



The Navy Should Not Rely on the Swiss Cheese Risk Model

By Commander Michael A. Kidd and Lieutenant Commander Andre T. Mayounga, U.S. Navy

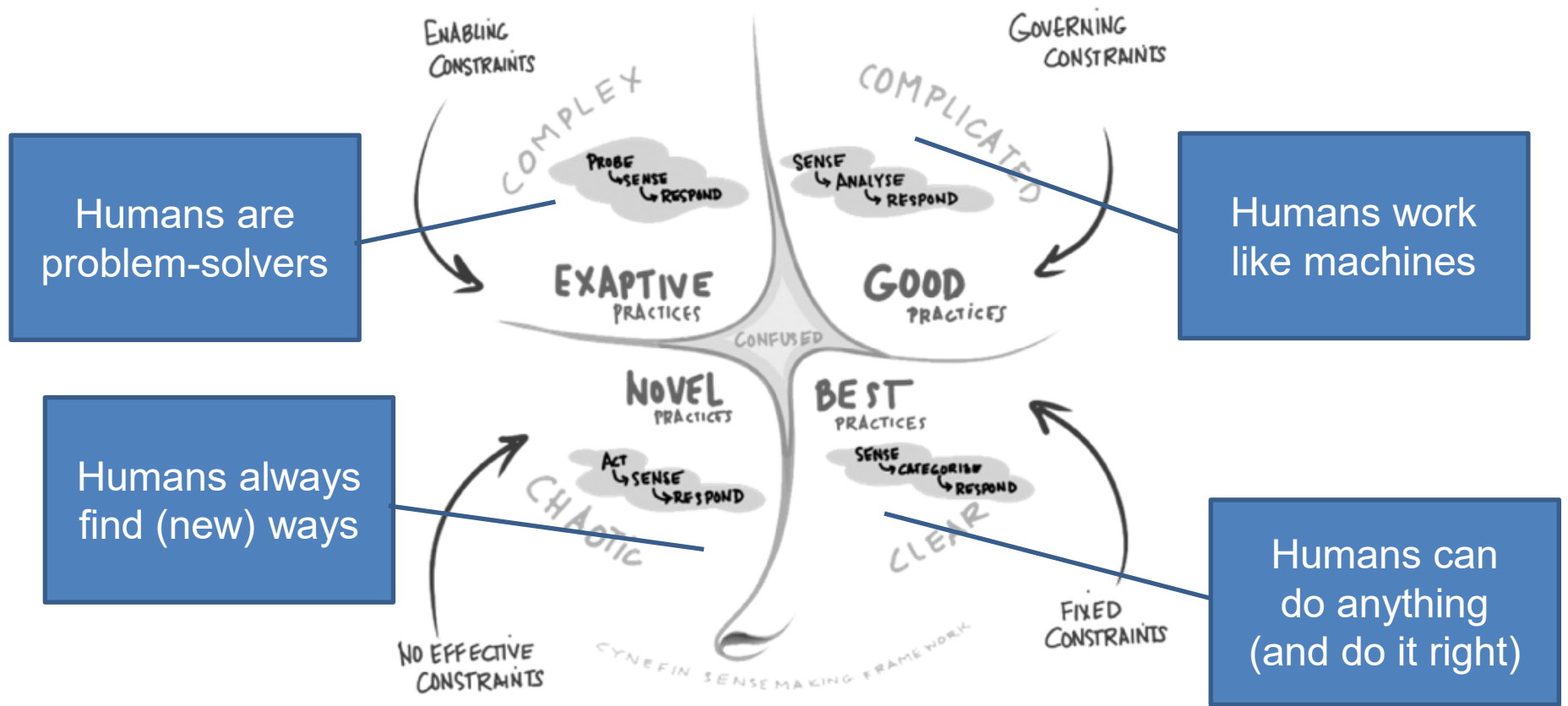
October 2023 | Proceedings | Vol. 149/10/1,448



USS *Bonhomme Richard*, San Diego, July 2020



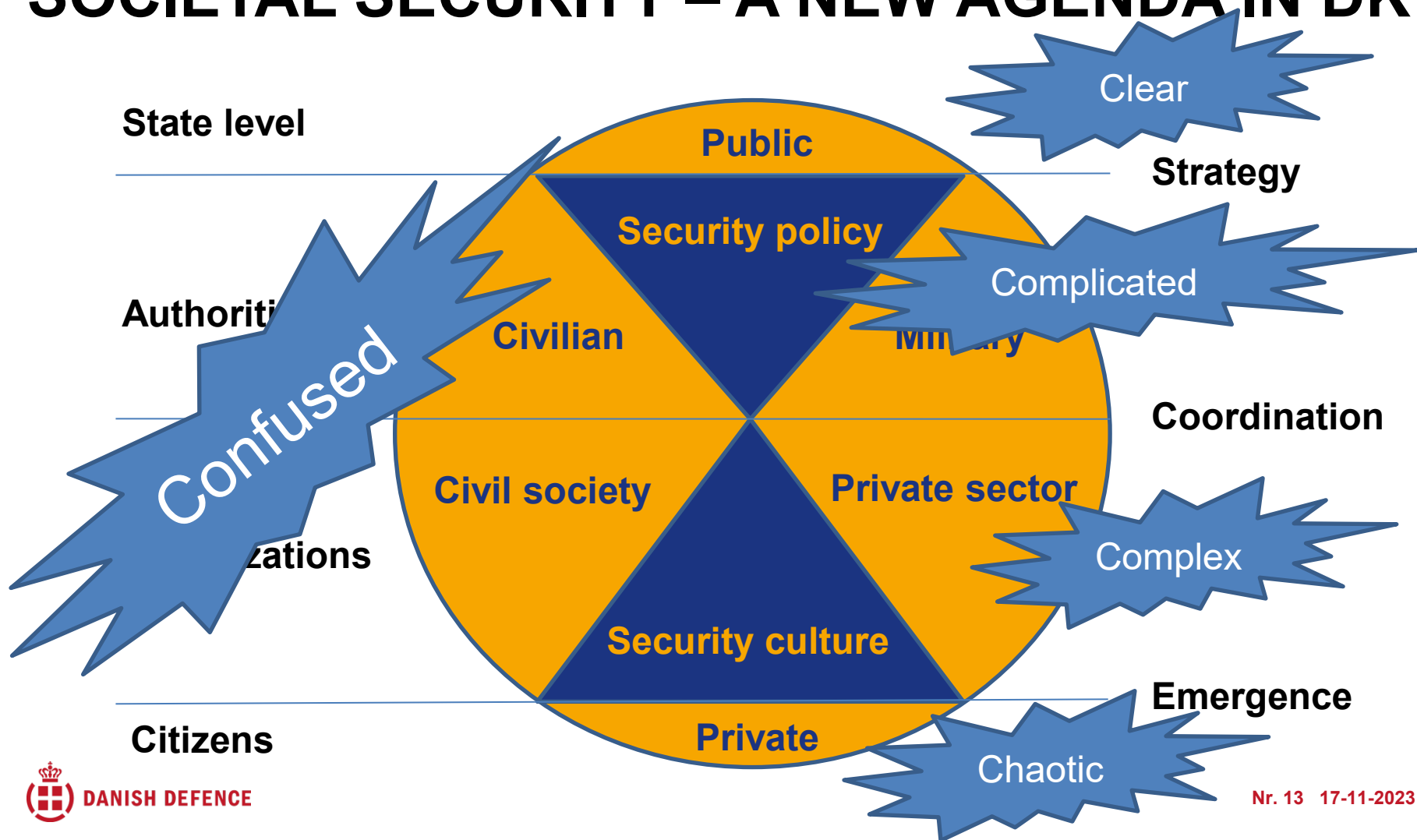
SIMPLE SOLUTIONS TO COMPLEX ISSUES...



Cynefin Framework for Sense-Making, David Snowden

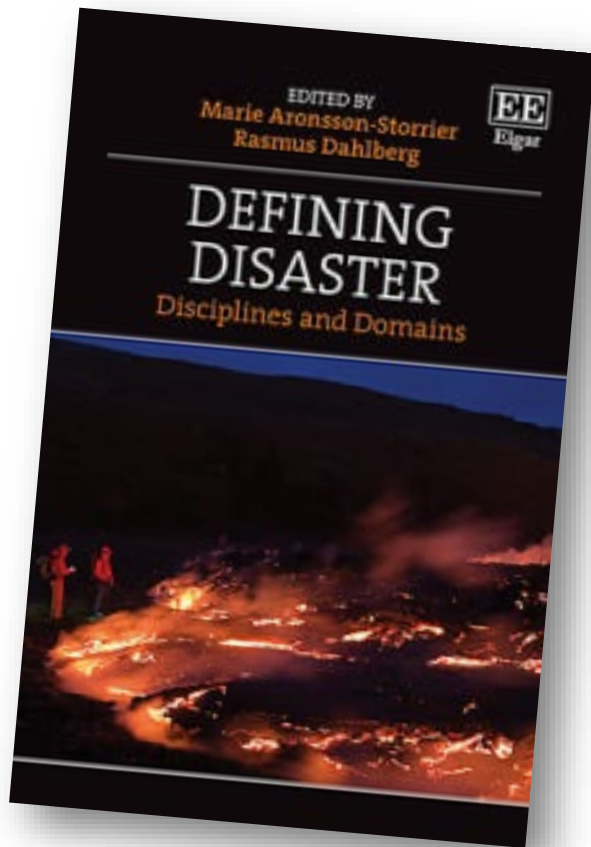


SOCIETAL SECURITY – A NEW AGENDA IN DK





THANK YOU FOR THE ATTENTION!



rada@fak.dk

www.rasmusdahlberg.com

facebook.com/rasmusdahlbergcom

linkedin.com/rasmusdahlberg

X: @DrDahlberg

COPE
Copenhagen Center for Disaster Research

