







Dear researcher at SDU

Welcome to the SDU eScience Center newsletter for February 2024, where we bring you the latest news and updates from our center and the wider eScience community. Here are some of the highlights for this issue:

 **NVIDIA H100 GPUs have landed!** The latest and most powerful GPUs for AI are now fully operational and integrated into the DeiC Interactive HPC system. They are available via the UCloud platform for all researchers in Denmark.

 **Quantum leap in computing!** Two advanced quantum computing applications, the NVIDIA CUDA Quantum Platform and the NVIDIA cuQuantum Appliance, are now available on UCloud! This deployment marks a significant milestone in the Danish quantum computing ecosystem.

 **Time to apply for High Performance Computing (HPC) resources!** Get ready for the second half of 2024. DeiC has opened the next call for national HPC resources with a deadline for applications on the **12th of March 2024 at 12:00**. Similarly, SDU has opened the next call for local HPC resources, with applications due by the **14th of April 2024 at 23:59**.

 **Save the Date!** SDU will be visited by DeiC on the **29th of February!** This is an excellent opportunity for SDU researchers to learn more about the many possibilities for national services in DeiC, including how their department/research group can take advantage of the resources available to SDU through DeiC. Don't forget to register by the **22nd of February**: [Register Here](#).

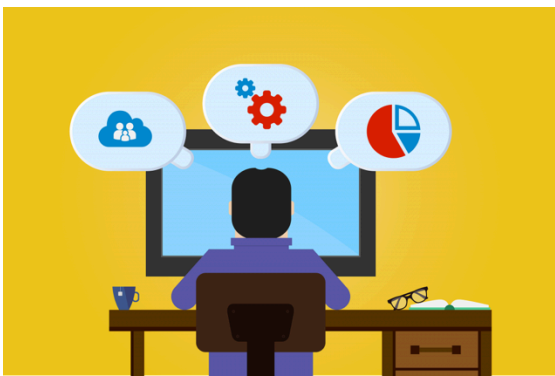
We hope you enjoy reading. If you have any questions, comments, or suggestions, please do not hesitate to contact us. We are always happy to hear from you and assist you with your eScience needs.

The next SDU eScience Center newsletter will be out in April 2024.



[SDU opens call for HPC resources](#)

Researchers at SDU can now apply for so called “large projects” for HPC resources available from 1st of July to 31st of December 2024. The deadline for applications is 14th of April 2024 at 23:59. Large projects are [Read more ...](#)



[National call for HPC resources is open](#)

DeiC has opened the next call for national HPC resources with a deadline for applications on the 12th of March 2024 at 12:00. You can find out how to apply for the national pool of HPC resources via the DeiC website. [Read More ...](#)



[Introducing our student assistants](#)

Towards the end of 2023, the SDU eScience Center hired three student assistants for the two teams: user support and infrastructure. With the growing interest in HPC resources at SDU – as well as interest from other universities [Read More ...](#)

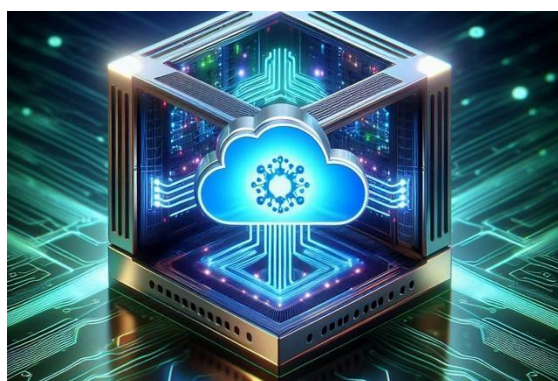


[SDU's new AI GPUs ready to use via DeiC Interactive HPC](#)

In November 2023, 16 NVIDIA H100 GPUs, the latest and most powerful GPUs for AI, landed at SDU.

The new GPUs were quickly installed in the SDU server room, and after the arrival of new power cables, [Read More](#)

...



[UCloud offers integration of advanced Quantum Computing Applications](#)

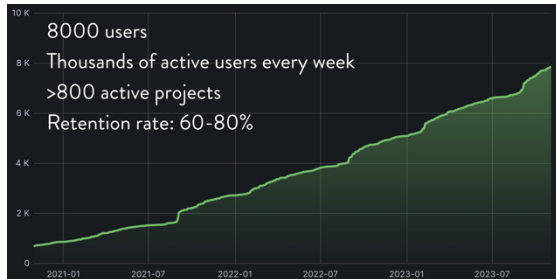
The SDU eScience Center is proud to announce the deployment of two advanced quantum computing applications on UCloud: the NVIDIA CUDA Quantum Platform and the NVIDIA cuQuantum Appliance.

These applications show our continuous commitment to offer [Read More ...](#)



[Apply for HPC resources \(SDU employees only\)](#)

Many SDU researchers succeeded in receiving a DeiC national grant for HPC resources during the latest call. This has freed up a lot of local SDU resources, and we are therefore opening a new call to distribute the [Read More ...](#)



[8000 users on UCloud](#)

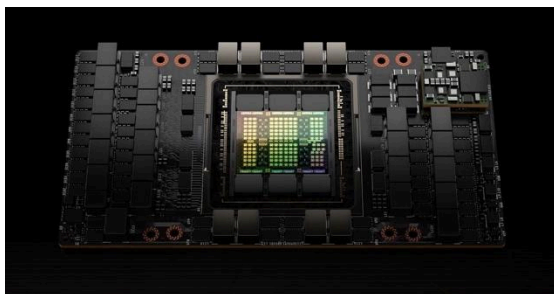
We're here again – UCloud hits another milestone: There are now more than 8000 users! This is an increase of 1000 users during less than 3 months!

The activity on the platform has been sky-high during the past [Read More ...](#)



[LUMI retains its position as Europe's fastest supercomputer](#)

EuroHPC Joint Undertaking's LUMI supercomputer reached the fifth spot on the new [Top500 list](#) of world's fastest supercomputers released at the SC23 conference in Denver, Colorado, on the 13th of November 2023. LUMI reached a measured High-Performance [Read More ...](#)



[SDU will host state-of-the-art GPUs for AI available through DeiC Interactive HPC](#)

AI companies around the world are scrambling to get their hands on the latest and most powerful NVIDIA GPU called H100. The biggest customers include OpenAI, Microsoft and Google. Now, 16 NVIDIA H100 GPUs have landed at SDU, [Read More ...](#)



[DeiC Conference 2023](#)

The SDU eScience Center was present at this year's annual DeiC conference where the overall topic was "Providing secure digital infrastructure for research and education". Read the reflections on the conference below from our team leaders [Read More ...](#)

Contact us

SDU eScience Center
University of Southern
Denmark

Campusvej 55, 5230
Odense M, Denmark
escience@sdu.dk

For user support:
support@escience.sdu.dk

SDU Data Protection



Collaborations



AALBORG
UNIVERSITY



AARHUS
UNIVERSITY