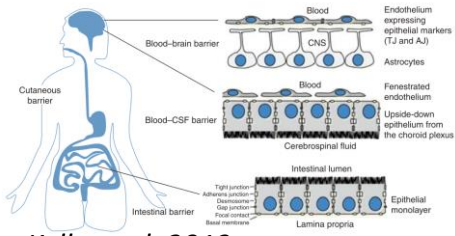




Transportomics in ADME  
Asst. Professor Bala Krishna  
bapra@sdu.dk

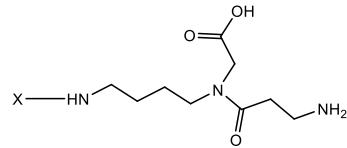


Generation of gene knockouts of pathogenic bacteria crossing intestinal and blood brain barriers for the identification of biomarkers using metabolomics (Collaboration with BMB, Center for biosustainability, DTU).



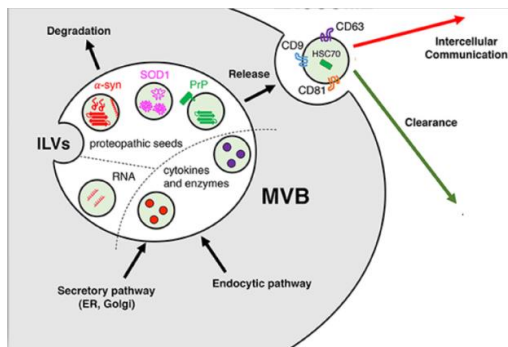
Kelly et al. 2013

Synthesis of novel peptide/peptide-peptoid hybrid (solid phase and in solution) substrates for the delivery of antibiotics in to cells. (In collaboration with Roskilde University and University of Copenhagen)



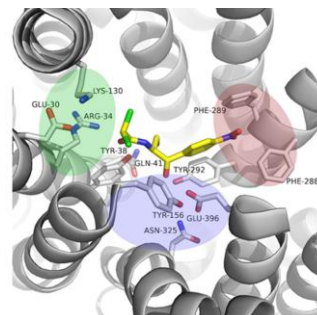
Manuscript under preparation

Formulation of lipophilic drugs in exosomes and cellular vesicles for topical delivery of drugs. (In collaboration with JAIST, Japan, University of Washington, USA, University of Copenhagen and Canna-Therapeutics).



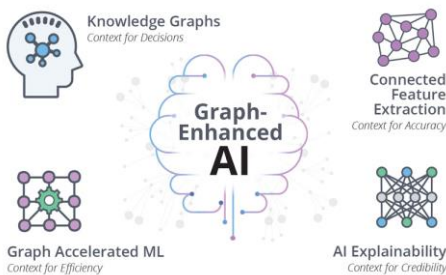
Soria et al. 2017

Identification of novel substrates for bacterial SLC transporters (In collaboration with University of Copenhagen).



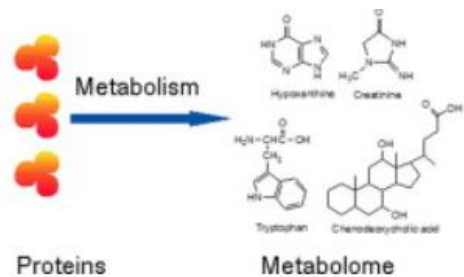
Prabhala et al. 2017

Database development of drug transporters, (In collaboration with Coventry University UK)



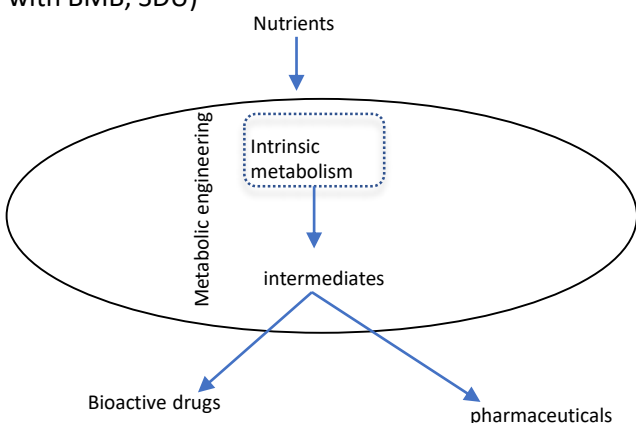
Neo4J

Understanding the transportome and metabolome of skin under normal and carcinogenic conditions (In collaboration with University of Washington, USA, Odense University Hospital and Roskilde University)



Zhao et al. 2014

Developing cell factories for the sustainable production of pharmaceuticals (In collaboration with BMB, SDU)



Analytical characterization of phyto and endocannabinoids. (In collaboration with Canna therapeutics)

