



EUROPEAN DOCTORAL SCHOOL OF DEMOGRAPHY

THE EDSD IS AN INNOVATIVE COLLABORATION OF DEMOGRAPHIC INSTITUTES AND UNIVERSITY DEPARTMENTS ACROSS EUROPE. ITS MISSION IS TO EDUCATE THE NEXT GENERATION OF DEMOGRAPHERS. — **IT IS FREE AND YOU GET FULL FELLOWSHIPS.**

1 FREE EDUCATION

In demography at great locations. Odense, Denmark in 2018. No tuition, full scholarships.

2 FIND A JOB AFTER

Job recruitment through the network across Europe and globally.

3 APPLY NOW

For Sep 2018 admission. Details about the requirements on next page.

FOR FURTHER INFORMATION GO TO
WWW.EDS-DEMOGRAPHY.ORG



“ WHERE YOUR INTERESTS AND ASPIRATIONS MEET THE OPPORTUNITIES IN AN INTERNATIONAL ENVIRONMENT.

Virginia Zarulli, Italy



“ EDS D INTRODUCED ME TO A WORLDWIDE RESEARCH NETWORK.

Jonas Schöley, Germany

Previous EDSD students now working at MaxO

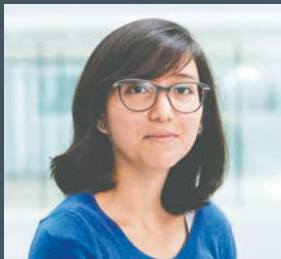


FOR FURTHER INFORMATION GO TO
WWW.EDS-DEMOGRAPHY.ORG



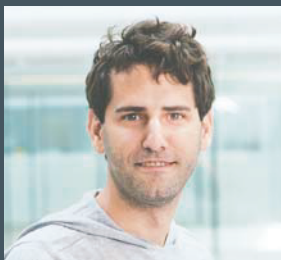
“ THE EDS IS A HIGHWAY
TO A GREAT NETWORK
IN THE FIELD OF
DEMOGRAPHY.

Søren Kjærgaard, Denmark



“ I MEET MANY OF MY
FRIENDS AND FORMER
EDSD COLLEAGUES AT
INTERNATIONAL CONFERENCES.
EDSD IS REALLY FORMING THE FUTURE
GENERATION OF DEMOGRAPHERS.

Catalina Torres, Columbia/Canada



“ THE INTERSECTION OF
CULTURAL DIVERSITY
AND THE BRILLIANT
PROFESSORS MADE EDS A
PERFECT EDUCATIONAL
PROGRAMME FOR ME!

Marius Pascariu, Romania

HOW TO APPLY

To be eligible for admission to the program, a student should

- Hold an above average Master's degree in demography, mathematics, statistics, sociology, geography, biology, computer science, economics, history or another relevant field
- Possess a curious mind and a deep interest in demography and population development either of humans or of species across the tree of life
- For detailed information on eligibility, go to www.eds-demography.org

Application deadline April 15, 2018 for start date in September 2018

Apply early and get early feedback about prospects for admission

TO SEE WHAT DOCUMENTS TO SUBMIT GO TO

WWW.EDS-DEMOGRAPHY.ORG

WHAT Learning demography as part of, or precursor to, PhD studies, certified by the European Association for Population Studies **WHEN** early September 2018 through July 2019

WHERE Rostock in Germany for 6 weeks at the start, then Odense **WHY** Quantitative research skills and great career perspective **HOW** If you hold a Master's and are interested, apply! **CAN I AFFORD IT** No fees. Full scholarships! **WANT TO LEARN MORE**

Visit us at www.eds-demography.org

IN PARTNERSHIP WITH



MAX-PLANCK-INSTITUT
FÜR DEMOGRAFISCHE
FORSCHUNG



MAX PLANCK INSTITUTE
FOR DEMOGRAPHIC
RESEARCH



www.sdu.dk

www.demogr.mpg.de

www.population-europe.eu

www.eaps.nl