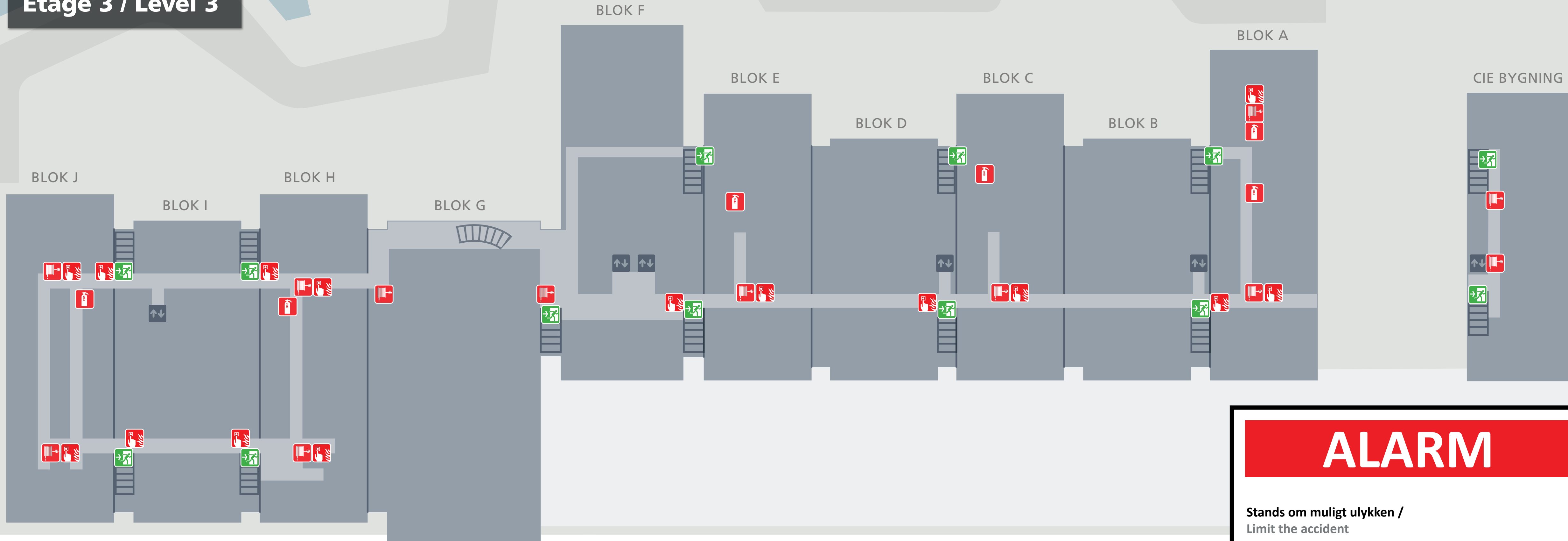






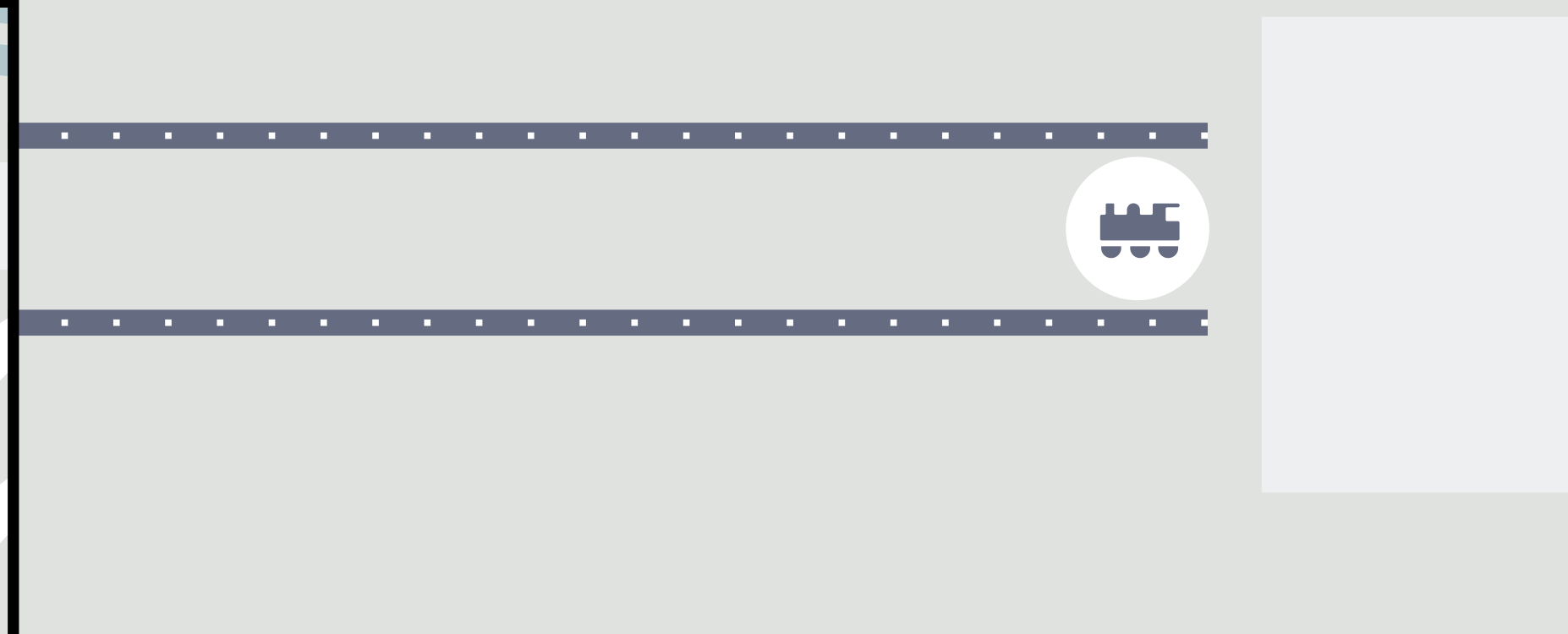
Etage 3 / Level 3



FOR DIN SIKKERHED / FOR YOUR SAFETY

-  **Safety point:**   
-  Førstehjælpsudstyr / First aid equipment
-  Hjertestarter / Defibrillator
-  Brandslukningsudstyr / Firefighting equipment
-  Brandslange / Fire hose
-  Flugtvej / Emergency exit

SAMLEPLADS / ASSEMBLY POINT



ALARM

Stand om muligt ulykken / Limit the accident

Begræns skaden / Contain the damage

Ring 1-1-2. Oplys: / Call 1-1-2. Tell them:

Hvad er dit navn / Your name
Hvad er der sket / What has happened
Hvor ringer du fra / Where you are calling from:

Alsion 2, DK-6400 Sønderborg

Evakuer området om nødvendigt / Evacuate the area if necessary

Aktiver varslingsanlæg hvis det forefindes / Activate any alarms
Alarmer dine omgivelser mundligt / Alert those in your vicinity as quickly as possible
Benyt nærmeste sikre udgang / Use the nearest safe exit

Ring 6550 8888 og informer SDU / Call 6550 8888 and inform SDU