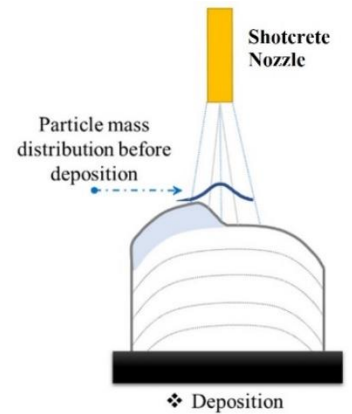
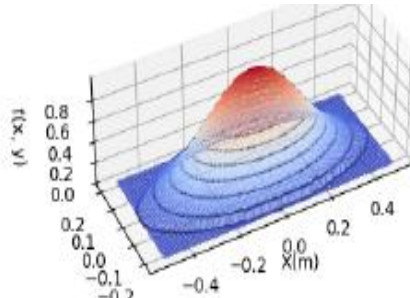
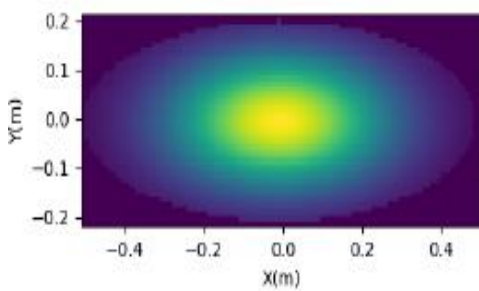


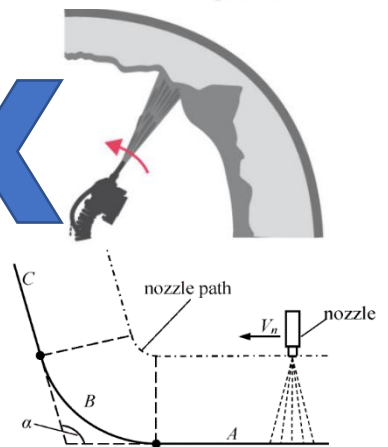
# Mobile 3D shotcreting in harsh and space-restricted environments

**Mohammad Reza Yazdi Samadi**  
 SDU Robotics  
 The Maersk Mc-Kinney Moller Institute  
 University of Southern Denmark  
*Principal supervisor:*  
 Christian Schlette, SDU Robotics

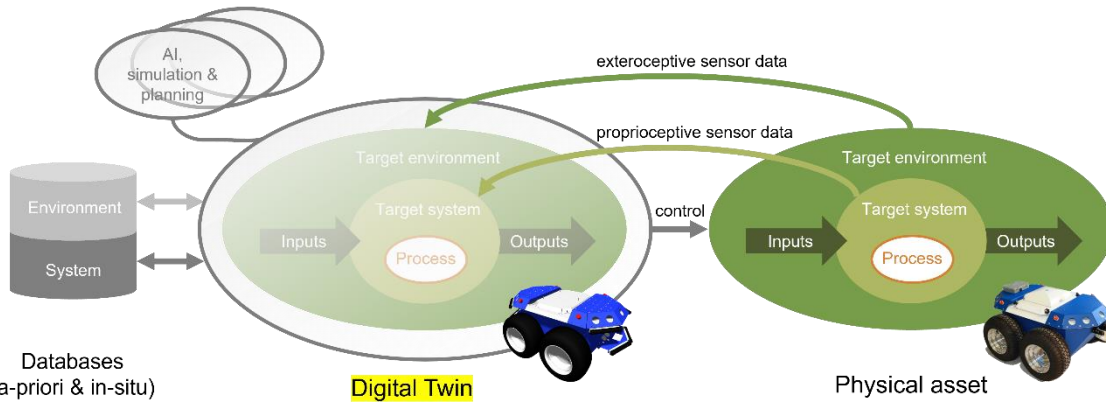
**Shotcrete** is “A concrete-placing process where concrete mixtures are conveyed through a hose and then pneumatically projected at high velocity onto a surface to achieve high-quality, in-place compaction.”  
 - American Shotcrete Association



Develop Shotcrete deposition model



Tool trajectory generation



Fabrication of the Digital Twin

